

Central Valley Salmon and Steelhead  
Harvest Monitoring Project  
2002 Angler Survey

State of California  
The Resources Agency  
Department of Fish and Game

September 2003

Central Valley Salmon and Steelhead  
Harvest Monitoring Project  
2002 Angler Survey



Prepared by:

Duane A. Massa, Fishery Biologist  
&  
Tom Schroyer, Fishery Biologist

Sacramento Valley & Central Sierra Region  
1701 Nimbus Road, Suite "A"  
Rancho Cordova, CA 95670-4599

# Abstract

In October 1992, the Central Valley Project Improvement Act (CVPIA) was signed into law. One objective of the CVPIA was to restore the abundance of natural fish stocks in Central Valley rivers and streams. To achieve this objective, the CVPIA required the development of restoration actions that ensure sustainable, long-term populations of native anadromous fish stocks. Section 3406(b)(16) of the CVPIA specifies the development of a monitoring and assessment program to evaluate the effectiveness of implemented restoration actions. The Comprehensive Assessment and Monitoring Program (CAMP) was established for this purpose. The CAMP program recommends monitoring of both adult and juvenile fish populations. Adult monitoring was recommended to include spawner returns (escapement), as well as in-river recreational, ocean recreational and commercial harvest estimates.

In 1998, the California Department of Fish and Game (Department) created the Central Valley Salmon and Steelhead Harvest Monitoring Project to help enumerate the number of adult Chinook salmon and steelhead resulting from natural production in Central Valley Rivers and streams. The Project's objective was to determine annual estimates of the total in-river harvest of salmon and steelhead. In addition, this project would provide limited harvest data on other anadromous and resident sport fish species.

In 2002, the fifth year of the project, the Department conducted an angler survey on the Sacramento, American, and Feather rivers between January 1 and December 31, 2002. Due to budget constraints, the Monitoring Project focused on rivers that had significant angler effort for salmon and steelhead. A total of 41,148 anglers were surveyed with an estimated 3,059,685 angler-hours spent sport fishing. Chinook salmon were the target of most anglers, while striped bass were the second most-targeted species. Anglers fishing for salmon expended an estimated 1,870,023 hours during the season. Striped bass anglers expended an estimated 524,394 hours. Angling hours for steelhead were estimated at 116,833.

Anglers fishing for Chinook salmon harvested an estimated 110,887 and released 47,099 salmon in 2002. Striped bass anglers harvested an estimated 18,434 and released 103,492 striped bass. The majority of steelhead anglers practiced catch-and-release fishing in 2002; the total estimated harvest was 1,612, whereas an estimated 17,939 steelhead were caught and released.

# Acknowledgements

The authors wish to acknowledge the exemplarily work performed by the seasonal field staff during the 2002 sampling season. Their determination to collect data during the most inclement weather will not be soon forgotten. Thanks to Jeremy Bonesio, Andy Popper, Brittany Blain, Chris Benedict, Chris Cox, Dan Andrews, Dave Leverenz, Jennifer Burghardt, Josh Grigg, John Hileman, Kristin McCleery, Gavin Hearn, Mike Gorman, Mark Michilizzi, Phil Clark, Robert Eandi, Sarah Angle, Tom Safford, Tim Mulloy, Tanya Thayer and Victoria Lopez.

This document fulfills the reporting requirement guidelines set by cooperative agreement no. 114200J106 between the United States Fish and Wildlife Service (USFWS) and the California Department of Fish and Game. Funding for this project was provided by the USFWS, Comprehensive Assessment and Monitoring Program (CAMP), as part of this agreement, pursuant to the Central Valley Project Improvement Act (CVPIA), section 3406(b).

# Table of Contents

<u>Abstract</u>	<u>i</u>
<u>Acknowledgements</u>	<u>ii</u>
<u>Table of Contents</u>	<u>iii</u>
<u>Introduction</u>	<u>1</u>
<u>Methods</u>	<u>2</u>
<u>Study Area</u>	<u>2</u>
<u>Statistical Design</u>	<u>2</u>
<u>Data Collection</u>	<u>5</u>
<u>Estimate Calculations</u>	<u>8</u>
<u>Results and Discussion</u>	<u>9</u>
<u>Literature Cited</u>	<u>16</u>
<u>Appendix A: Estimated Angler-Hours and Sampling Frequency - 2002</u>	<u>17</u>
<u>Appendix B: Estimated Harvest, Release and Angler-Hours         by Target Species - 2002</u>	<u>19</u>
<u>Appendix C: Estimated Angler-Hours and Sampling Frequency – 2003</u>	<u>31</u>
<u>Appendix B: Estimated Harvest, Release and Angler-Hours         by Target Species - 2003</u>	<u>33</u>

# Introduction

The Central Valley Project (CVP) was initially scribed in the early 1930's as a master plan to curtail flooding in the Central Valley of California and to provide stable sources of water for California's increasing needs. Finalized in 1935, the first work began on the Contra Costa Canal in 1937 and the last planned dam in the project was completed in 1979. Significant projects included the Shasta Dam and the Tehama-Colusa Canal; just two of 20 reservoirs and over 500 miles of canal in the project.

By the 1960's, it was becoming clear that some of the State's fisheries were no longer sustainable. Hit especially hard were anadromous stocks, notably Chinook salmon and steelhead. Projects like Shasta Dam and the Red Bluff Diversion Dam blocked access to spawning grounds and created migration barriers. Population counts from the 1960's through the 1990's showed marked declines in salmon stocks on the Sacramento River.

As governing bodies recognized that the CVP was a major contributor to the decrease in anadromous fish stocks, the Central Valley Project Improvement Act (CVPIA) was enacted in October 1992 to reverse these trends. It amended the original CVP to include fish and wildlife protection and restoration as new functions. The CVPIA called for long-term sustainable yields and a Comprehensive Assessment and Monitoring Project (CAMP) to assess the effectiveness of CVPIA restoration actions. Monitoring would include annual escapement surveys, aerial redd surveys, real-time juvenile monitoring, and in-river harvest estimates. The Anadromous Fish Restoration Program (AFRP), also created by the CVPIA, established goals to double Central Valley fisheries over the average baseline from 1967 through 1991. The CAMP projects were developed to assess whether CVPIA actions accomplished the AFRP goals.

In 1998, the California Department of Fish and Game (Department) created the Central Valley Salmon and Steelhead Harvest Monitoring Project (CVSSHMP) to estimate the harvest of Chinook salmon and steelhead in Central Valley rivers and streams. The project was to determine annual estimates of the total in-river harvest. In addition, this project would provide limited harvest data for other anadromous and resident sport fish species. Information collected from the project could then be used to guide management practices so that AFRP goals may be met. The 2002 report marks the fifth year of this program on the Sacramento River and its tributaries.

# Methods

## Study Area

The study area consisted of 377 miles of the Sacramento, American and Feather rivers (Figure 1). This study area was divided into 13 sections ranging from 1 to 56 miles in length (Table 1). Demarcation points of the sample sections were selected to facilitate ease of sampling during the course of the year and to further stratify the study to increase sampling accuracy.

## Statistical Design

A stratified random sample design, modeled from the study used by the Sacramento River System Sport Fish Inventory (Wixom, 1995) was used to estimate the in-river harvest during the daytime sport fishery.

A total of thirteen sections were sampled. Sample sections ranged in length from 4 to 56 river miles. Two sample sections, representing unique fisheries, were approximately one river mile in length. Sampling schedules and data summaries were compiled on a monthly basis. Months were arbitrarily chosen as sample periods.

All sample sections were surveyed eight randomly-selected days per month; four weekdays and four weekend days. Weekdays and weekend days were placed in separate strata due to the increase in angling effort commonly associated with weekend days. Sampling frequencies for each section were recorded and tabulated in Appendix A.

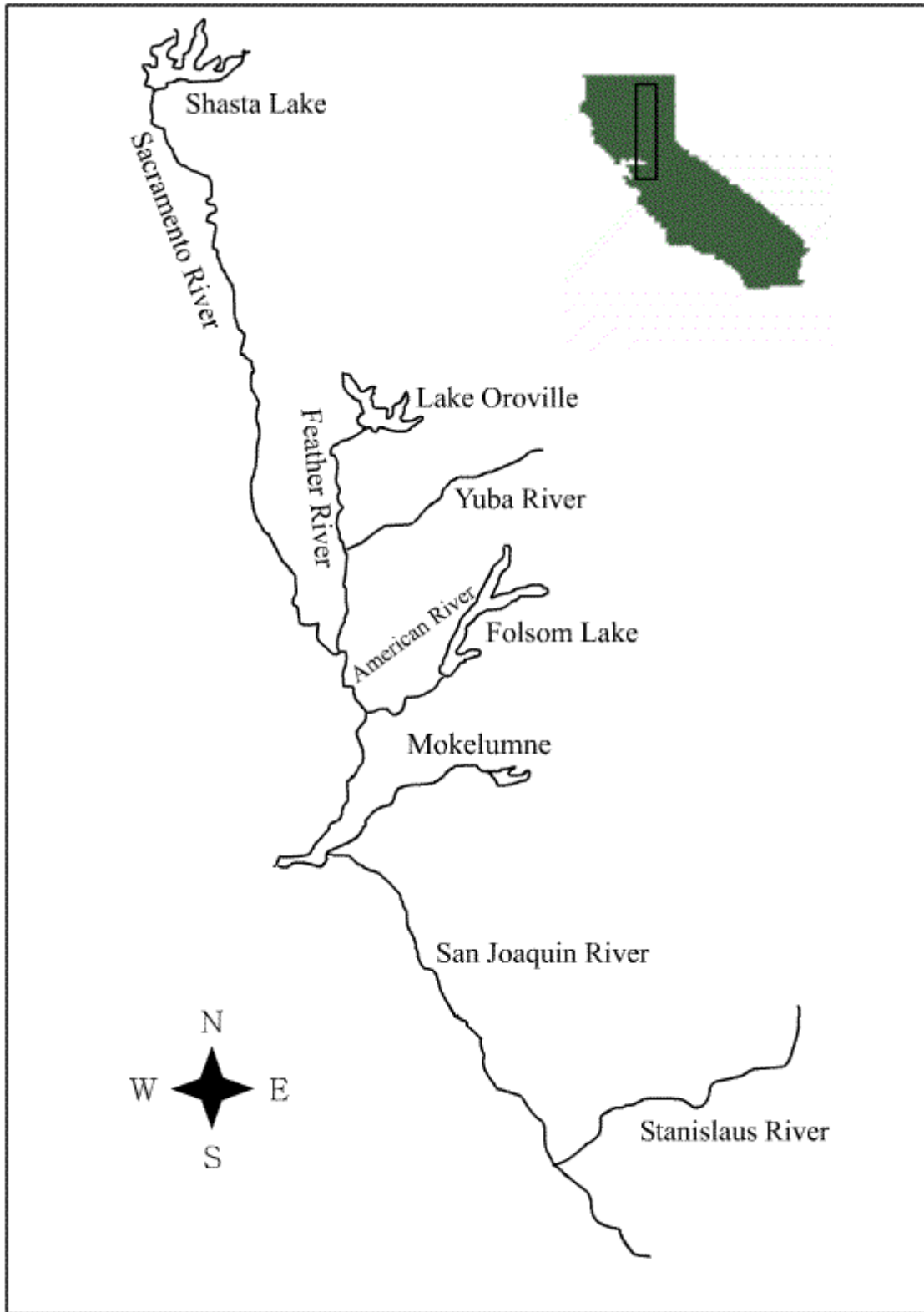


Figure 1. Angler Survey Rivers, 1998-2000



**Table 1. Description of Sections Surveyed, January 1, 2002 - December 31, 2002**

River Miles	Section Number	Description	Distance (Miles)
<b>Sacramento River/Delta</b>			
13 to 59	2.0	Rio Vista Bridge to mouth of American River	48
60 to 89	3.0	American River to Knights Landing (Hwy. 113 Bridge)	29
90 to 143	4.0	Knights Landing to Colusa (River Rd. Bridge)	54
144 to 199	5.0	Colusa to Hamilton City (Hwy. 32 Bridge)	56
200 to 242	6.0	Hamilton City to Red Bluff Diversion Dam	43
243 to 280	7.0	Red Bluff Diversion Dam to Deschutes Road Bridge	38
281 to 298	8.0	Deschutes Road Bridge to ACID Dam at Redding	18
<b>American River</b>			
500 to 504	9.0	Discovery Park to Interstate 80 Bridge	4
505 to 522	10.0	Interstate 80 Bridge to Hazel Avenue Bridge	18
523	10.1	Hazel Avenue Bridge to Nimbus Dam	1
<b>Feather River</b>			
400 to 438	11.0	Verona to Sunset Pumps	39
439 to 458 460 to 467	12.0	Sunset Pumps to Feather River Fish Hatchery (excluding Thermalito River outlet)	28
459	12.1	Thermalito River Outlet (only)	1

For each section surveyed, a random start time and launch location were chosen using a random sample generator in Microsoft Excel 2000. Start times were classified as either early or late. An early start time was scheduled to begin ½ hour after sunrise; whereas a late start time would vary depending on the section length and time of year. Late start times were scheduled so the survey would end at or near sunset. Launch locations were located at either the upstream or downstream boundary of the survey section. In those sections where kayaks were used, the launch location was always at the upstream boundary of the section.

All data collected were linked by river mile. Each river was given a unique number series to identify it from other rivers in the database. Actual river miles were used for the Sacramento River sections. Tributaries were assigned unique number series to prevent duplication of river mile values. The number series assigned to each tributary were as follows: Feather River - 400 series; and American River - 500 series. River mile

designations were marked in ascending order from downstream to upstream. Therefore, anglers observed between river mile 200 and 201 were recorded as fishing at river mile 200. Garmin GPSmap-162<sup>®</sup> cartographic global positioning system (GPS) receivers and Lowrance Global Map 2000<sup>®</sup> receivers were used to identify angler location. Garmin MapSource<sup>®</sup> topographic quadrants, complete with river mile locations for all sampled waters, were loaded to the Garmin GPS units to simplify location identification. Lowrance GPS receivers were loaded with IMS SmartMap<sup>®</sup> NA-CA-C cartridges by LEI Extras, Inc.

All sample sections were surveyed by kayaks, drift boats or power boats. Kayaks and drift boats were used in shallow upstream reaches while power boats were used in rivers where tides, wind and waves demanded the use of more seaworthy boats.

## Data Collection

Three field data sets were required to calculate angler use and catch estimates; hourly counts, angler counts, and angler interviews. Hourly counts determined the portion of the whole represented by a sample day's angler count. For this survey, hourly counts collected by Wixom (1995) were used.

On each sampling day, a high speed pass of a randomly-selected river section was conducted. This first pass was called the angler count. Data collected during the angler count included the time of angler observation, their location by river mile, the number of boats, the number of boat anglers, and the number of shore anglers. Start and finish times for the angler count were recorded to note time of day for hourly count purposes, namely, what fraction of the daily fishing pressure did the angler count represent. At the end of the angler count, a return pass was made to conduct angler interviews. Prior to the start of angler interviews, the survey crew determined the feasibility of interviewing all anglers observed during the angler count. If it was determined that this was not feasible, every  $N^{\text{th}}$  angler was interviewed. Once an  $N^{\text{th}}$  angler interval was chosen, that interval was maintained throughout the entire section for that survey date. Data collected during each interview included: angler location by river mile, fishing method (boat or shore), number of hours fished to the nearest quarter-hour, number of anglers in group, target species, zip code, whether the trip was completed, and the number of fish kept and/or released by species.

Nine sport fish species found in Central Valley rivers were considered target species. Those species were: Chinook salmon, steelhead, rainbow trout, striped bass, sturgeon (all species), American shad, catfish (all species), sunfish (all species), and black bass (all species) (Table 2). If anglers did not indicate they were fishing for a target species, the code 'ANY' was used.

The number of fish kept and released was recorded separately for each of the nine target species. All other fish species caught were recorded separately by species in a column labeled, 'Other'.

A length measurement was used to differentiate between steelhead and rainbow trout. All rainbow trout 18" or greater were considered to be steelhead. Rainbow trout less than 18" were recorded as rainbow trout (McEwan, 1998).

Additional data were collected from five of the nine target species when kept by anglers. The five species were: Chinook salmon, steelhead, rainbow trout, striped bass and sturgeon. Each fish was measured to the nearest ½ centimeter and inspected for any marks or tags. A total length measurement was taken on sturgeon, whereas the fork length was used on all other species. All chinook salmon and steelhead caught were inspected for the presence of an adipose fin. A salmon or steelhead missing an adipose fin indicated the fish was of possible hatchery origin and likely contained a coded-wire tag (CWT) in its snout. All heads were removed from adipose-clipped fish and sent to the Department's Ocean Salmon Project Laboratory in Healdsburg for later extraction and analysis.

**Table 2. Species symbols, common and scientific names of target species observed in the 2002 Angler Survey, January 1 through December 31, 2002.**

Family	Target Species	Species Symbol	Common Name	Scientific Name
Salmonidae:	Chinook Salmon	KS	King Salmon	<i>Oncorhynchus tshawytscha</i>
	Steelhead	SH	Steelhead Trout	<i>Oncorhynchus mykiss</i>
	Rainbow Trout	RT	Rainbow Trout	<i>Oncorhynchus mykiss</i>
Moronidae:	Striped Bass	SB	Striped Bass	<i>Morone saxatilis</i>
Acipenseridae:	Sturgeon	ST	White Sturgeon	<i>Acipenser transmontanus</i>
			Green Sturgeon	<i>Acipenser medirostris</i>
Clupeidae:	American Shad	AS	American Shad	<i>Alosa sapidissima</i>
Ictaluridae:	Catfish	CF	Channel Catfish	<i>Ictalurus punctatus</i>
			White Catfish	<i>Ameiurus catus</i>
			Brown Bullhead	<i>Ameiurus nebulosus</i>
			Black Bullhead	<i>Ameiurus melas</i>
Centrarchidae:	Sunfish	SF	Bluegill	<i>Lepomis macrochirus</i>
			Redear Sunfish	<i>Lepomis microlophus</i>
			Green Sunfish	<i>Lepomis cyanellus</i>
			Black Crappie	<i>Pomoxis nigromaculatus</i>
			White Crappie	<i>Pomoxis annularis</i>
	Black Bass	BB	Largemouth Smallmouth Spotted	<i>Micropterus salmoides</i> <i>Micropterus dolomieu</i> <i>Micropterus punctulatus</i>
Other:	Any Species	ANY	The 'ANY' designations was used for anglers who indicated they were not fishing for a specific species.	

## Estimate Calculations

Sample day estimates for angler-hours were created by dividing the observed angler count by the average hourly count within the respective hour interval. The mean of the sample days within a stratum was expanded by the number of days available in the month to obtain the total for the stratum. For each month and section, weekend and weekday strata were combined for total estimated angler-hours as follows:

$$\text{TOTALAH}_i = [(\text{ALLWD}_i * \text{WDAVG}_i) + (\text{ALLWE}_i * \text{WEAVG}_i)]$$

$\text{TOTALAH}_i$  = total angler-hours (the subscript 'i' denotes the stratum containing a particular combination of section and month).

$\text{ALLWD}_i$  and  $\text{ALLWE}_i$  = number of weekdays and weekend days, respectively available in the month.

$\text{WDAVG}_i$  and  $\text{WEAVG}_i$  = mean of expanded sample-day angler-hours for weekdays and weekend days, respectively.

Angler hour estimates were assigned to each species by multiplying the total angler-hours by the observed percent distribution of effort for each target species:

$$\text{TOTALAHSP}_{ij} = \text{TOTALAH}_i * \text{FISHHRS}_{ij}$$

$\text{TOTALAHSP}_{ij}$  = estimated angler-hours (subscript 'i' denotes the stratum containing a particular combination of section and month, subscript 'j' denotes target species).

$\text{TOTALAH}_i$  = total angler-hours (the subscript 'i' denotes the stratum containing a particular combination of section and month).

$\text{FISHHRS}_{ij}$  = the ratio of the sample total angler-hours for species 'j' divided by the sample total angler-hours for all species in section and month 'i'.

Catch-per-unit-effort (CPUE) was calculated from the sample total number of fish caught divided by the sample total hours fished for each target species within the selected month and section 'i'. The catch rate was assumed to be the same for all days of the week. Separate values were calculated for harvested and released fish. Therefore:

$$\text{CPUE}_{ij} = \text{SUMFISH}_{ij} / \text{SUMHRS}_{ij}$$

$\text{CPUE}_{ij}$  = catch-per-unit-effort for harvested or released target species.

SUMFISH<sub>ij</sub> = total observed number of fish harvested or released.

SUMHRS<sub>ij</sub> = total observed angler-hours expended to catch and release a target species.

Catch is the product of the estimated angler-hours and CPUE for target species, section, and month selected, where:

$$\text{CATCH}_{ij} = \text{TOTALAHSP}_{ij} * \text{CPUE}_{ij}$$

CATCH<sub>ij</sub> = Estimated catch for a harvested or released target species.

TOTALAHSP<sub>ij</sub> = estimated angler-hours (subscript 'i' denotes the stratum containing a particular combination of section and month, subscript 'j' denotes target species).

CPUE<sub>ij</sub> = catch-per-unit-effort for harvested or released target species.

## Results and Discussion

Angler surveys were conducted on the Sacramento, Feather and American rivers between January 1 and December 31, 2002. All rivers were not sampled during the entire year. Sections 9, 10, 10.1, 11, 12 and 12.1 were not sampled during January due to inadequate funding. Sections 5 and 8 were not sampled from February 1 through June 30, 2002 due to inadequate staffing. Sections 6 and 7 were not sampled during June, as new creel clerks were being recruited and trained. Sections 13 and 14 were surveyed from March 1 through May 31, 2002.

Additional data points from the 2003 sampling season are included in Appendices C and D of this report. Staffing problems and budget cuts disrupted normal sampling in 2003. Only three data points for the Sacramento River between Rio Vista and Redding were collected in 2003, representing harvest estimates for the months of January, February and July.

In 2002, our fifth year of surveys, a total of 41,148 anglers were interviewed that spent an estimated 3,059,685 hours sport fishing. Chinook salmon were the target of most angler efforts, with an estimated 1,870,023 hours expended during the season. Striped bass were the second most-targeted species, with 524,394 estimated angler-hours. Anglers targeting steelhead spent an estimated 116,833 hours for the areas surveyed.

Salmon anglers were estimated to have harvested 110,887 Chinook salmon in 2002. This represents the highest harvest observed by this project since 1999, when 93,150 Chinook salmon were estimated to have been harvested (Figure 2). As observed in previous surveys, the Sacramento River carried the majority of the Central Valley in-river harvest, followed by the Feather and American rivers. The Sacramento River contributed 54,091 salmon (49%), whereas the Feather and American rivers contributed 33,460 (30%) and 23,336 (21%), respectively, to the 2002 in-river harvest.

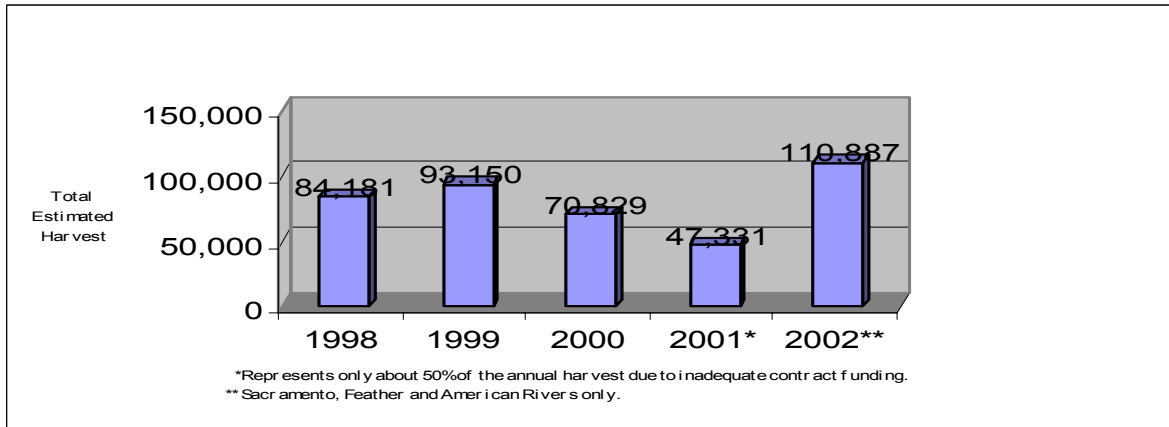


Figure 2. Central Valley Chinook Salmon Harvest Estimates

### Chinook Salmon

The Sacramento River Chinook salmon season opened on July 15, 2002 and continued to the emergency closure on December 31, 2002. Peak effort varied throughout the seven survey sections. From the American River confluence to Red Bluff, the peak effort occurred between the months of September and October (Figure 3). Section 2, from Rio Vista to the American River confluence experienced higher effort, relative to other Sacramento River survey sections. Effort above the Red Bluff Diversion Dam began following the removal of the diversion gates on September 15, and later peaked during mid-October.

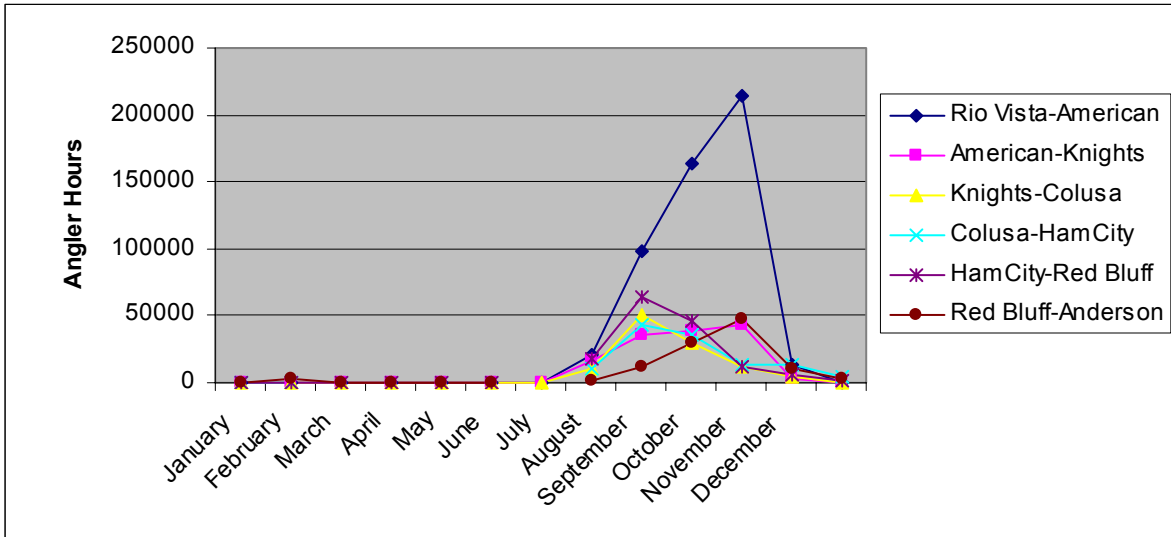


Figure 3. Estimated Angling Hours for Chinook Salmon in the Sacramento River, 2002

Estimated harvest followed the estimated effort closely for the Sacramento River. The Sacramento River between the American River confluence and Red Bluff saw peak levels of harvest between September and October (Figure 4). Section 2, from Rio Vista to the American River confluence experienced high levels of harvest, relative to other sections, which was associated with the angling effort expended in October and November. Section 7, located above the Red Bluff Diversion Dam, observed peak harvest during mid-October. Harvest prior to opening the diversion gates on September 15 was minimal, as anglers do not target this section in large numbers until the gates are lifted.

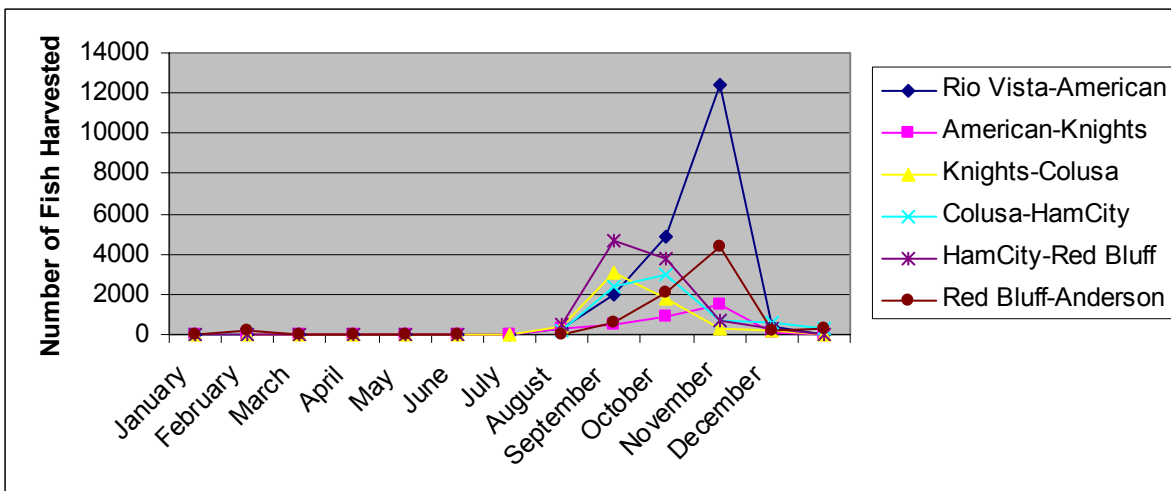


Figure 4. Estimated Harvest of Chinook Salmon from the Sacramento River, 2002

Salmon season on most areas of the Feather River opened on January 1, 2002 and closed on October 15, 2002. The area from Honcut Creek to the mouth was open year-



round, but the majority of the salmon effort occurred above this point. Effort began during mid-May, with a few anglers observed as early as April, and continued to the upstream closure dates in late September and mid-October (Figure 5). Downstream areas of the Feather River (Live Oak to the mouth) did not experience levels of fishing effort as observed in the upstream sections. Peak fishing from Live Oak to Oroville occurred from July through September. The Thermalito Outlet, which represents a special fishery due to concentrated high levels of effort, experienced peak effort from September through October. The Thermalito Outlet was estimated to endure higher levels of fishing pressure than the entire Feather River from Live Oak to Oroville.

Estimated Chinook salmon harvest on the Feather River began during May and continued through December (Figure 6). Peak harvest occurred during slightly different periods on the three survey sections. Sections 11 and 12 peaked in September, whereas section 12.1 peaked in August. Section 11 observed peak harvest approximately one month following peak effort. Section 12.1 saw peak harvest coincide with peak effort; however, the peak harvest continued well beyond the period of peak effort.

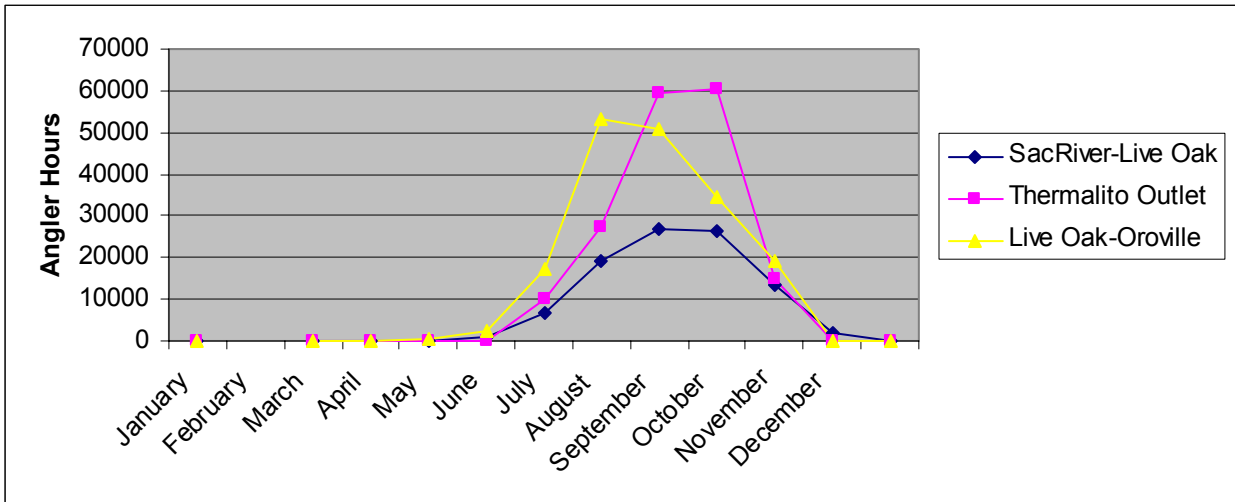
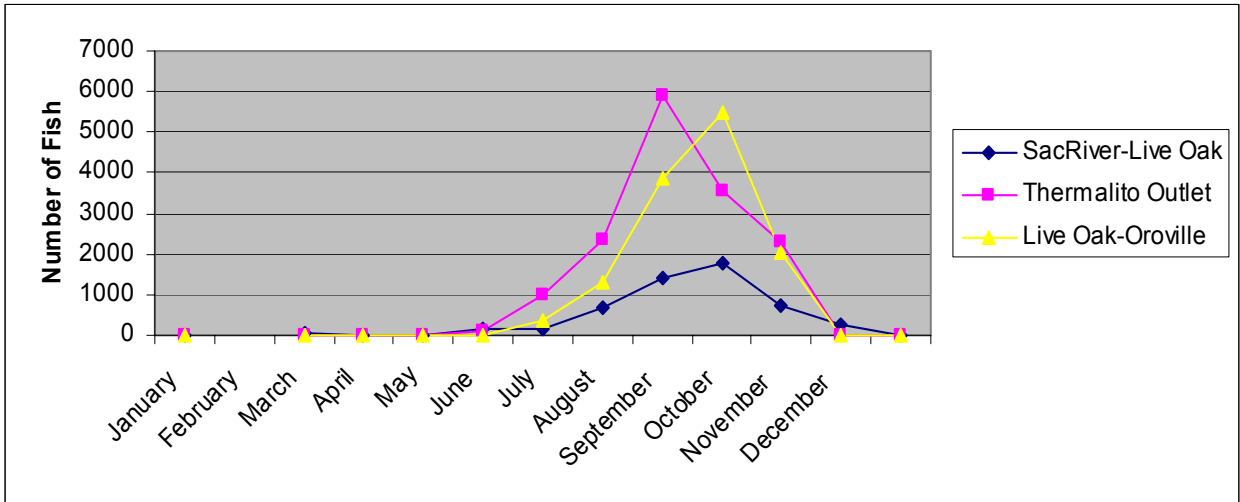
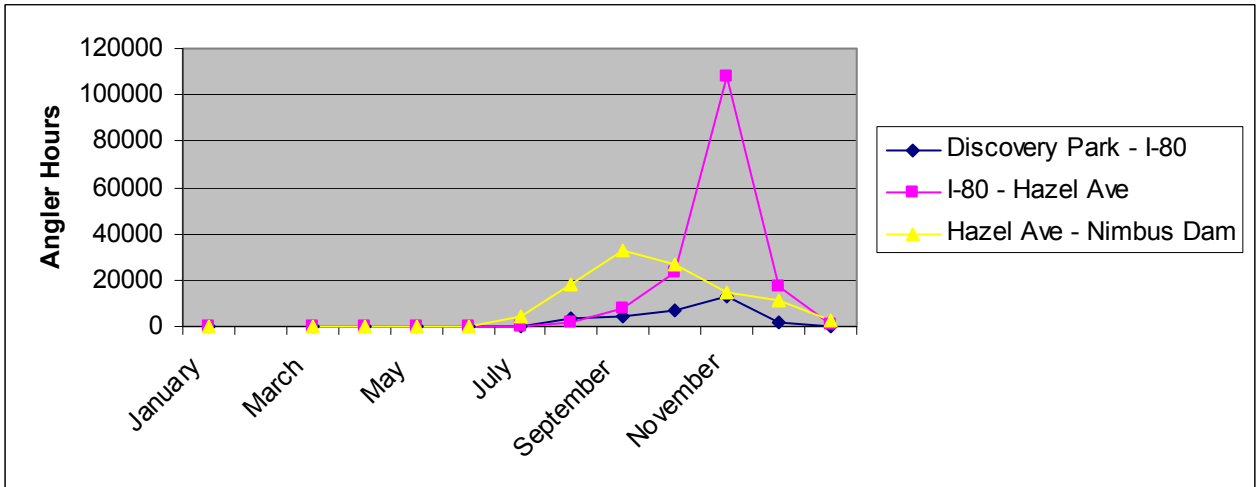


Figure 5. Estimated Angling Hours for Chinook Salmon in the Feather River, 2002



**Figure 6. Estimated Harvest of Chinook Salmon from the Feather River, 2002**

Salmon season on the American River was open during various times of the year, according to location (please refer to the 2002 California Code of Regulations, Title 14, Natural Resources for exact dates). Effort began in June and continued through December (Figure 7). Downstream areas from Discovery Park to the Interstate 80 Bridge experienced the lowest relative effort, as compared to upstream areas. From the Interstate 80 to Hazel Avenue, peak effort was observed during November. This section also was estimated to have the most effort. Upstream of Hazel Avenue to Nimbus Dam, peak effort occurred earlier in the year during September.



**Figure 7. Estimated Angling Hours for Chinook Salmon in the American River, 2002**

Harvest estimates on the American River closely mirrored the observed effort. Estimated harvest began in June and continued through December from Hazel Avenue to

Nimbus Dam (Figure 8). Downstream, from Hazel Avenue to Interstate 80, peak harvest occurred in November. The area from Interstate 80 to Discovery Park was estimated to produce the lowest level of harvest on this river.

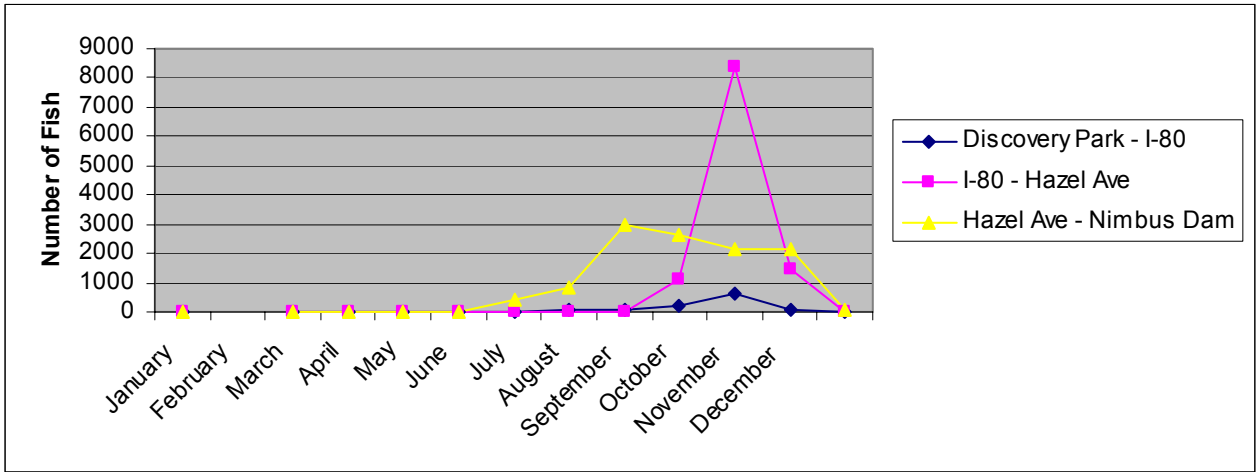


Figure 8. Estimated Harvest of Chinook Salmon from the American River, 2002

## Steelhead

Anglers targeting steelhead during the 2002 sampling season expended an estimated 116,833 hours fishing the Sacramento, Feather, and American rivers. Of the 19,551 steelhead estimated to be landed; 1,612 were kept and 17,939 were released. Effort on all three rivers was focused during the winter, spring, and fall months (Figures 9-11). Steelhead were not generally targeted during the summer months, except for the light relative effort on the Feather River (Figure 10).

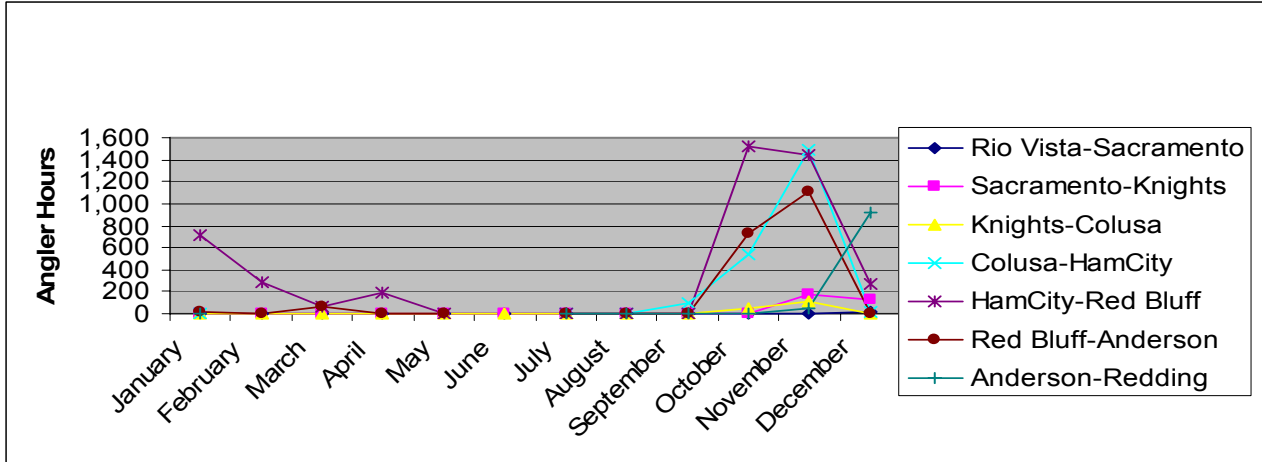


Figure 9. Estimated Angling Hours for Steelhead Angling in the Sacramento River, 2002

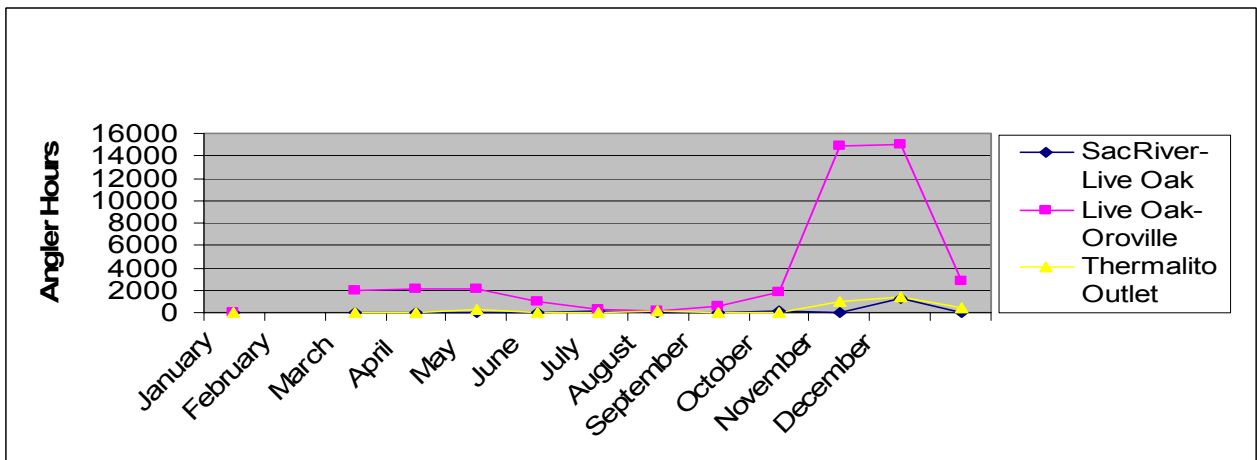


Figure 10. Estimated Angling Hours for Steelhead in the Feather River, 2002

Effort on the Feather and American rivers was much higher than that observed on the Sacramento River (Figure 12). The Sacramento River effort was centered in the sections above Colusa; being focused between Hamilton City and Red Bluff during most of the year. River mile 271, the confluence of Battle Creek and the Sacramento River

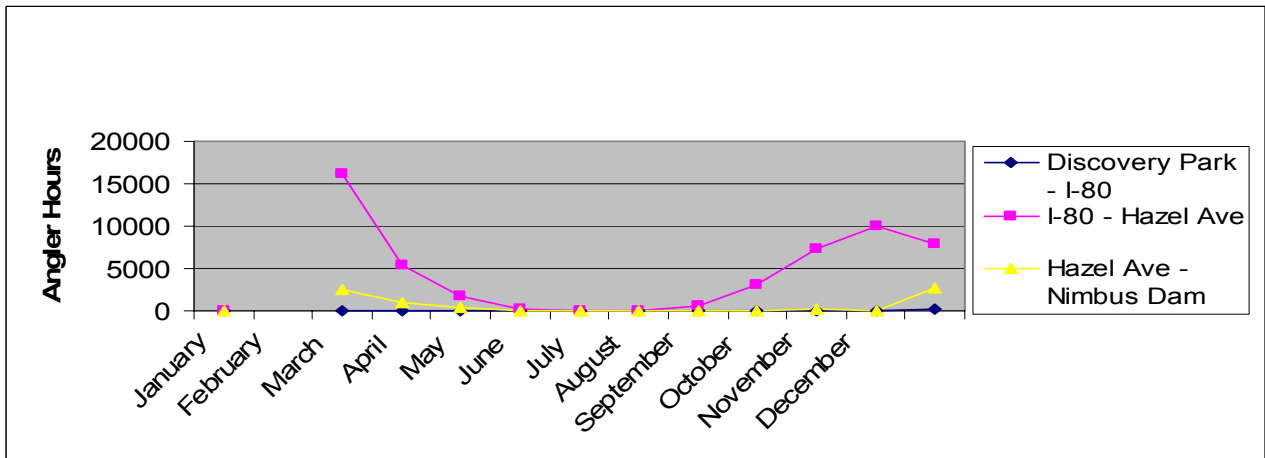


Figure 11. Estimated Angling Hours for Steelhead in the American River, 2002

also experienced a moderate effort. However, the American and Feather rivers carried the majority of the Central Valley steelhead effort with 59,309 and 47,537 hours expended, respectively. This accounted for 91% of the estimated total effort for all three rivers.

Steelhead landings were estimated to be most numerous on the American and Feather rivers. The Sacramento River produced a lower relative catch than its sampled tributaries. Although a higher number of steelhead were estimated to be caught on the Feather River, most of the actual harvest occurred on the American River, as anglers fishing the American River kept a greater number of landed steelhead.

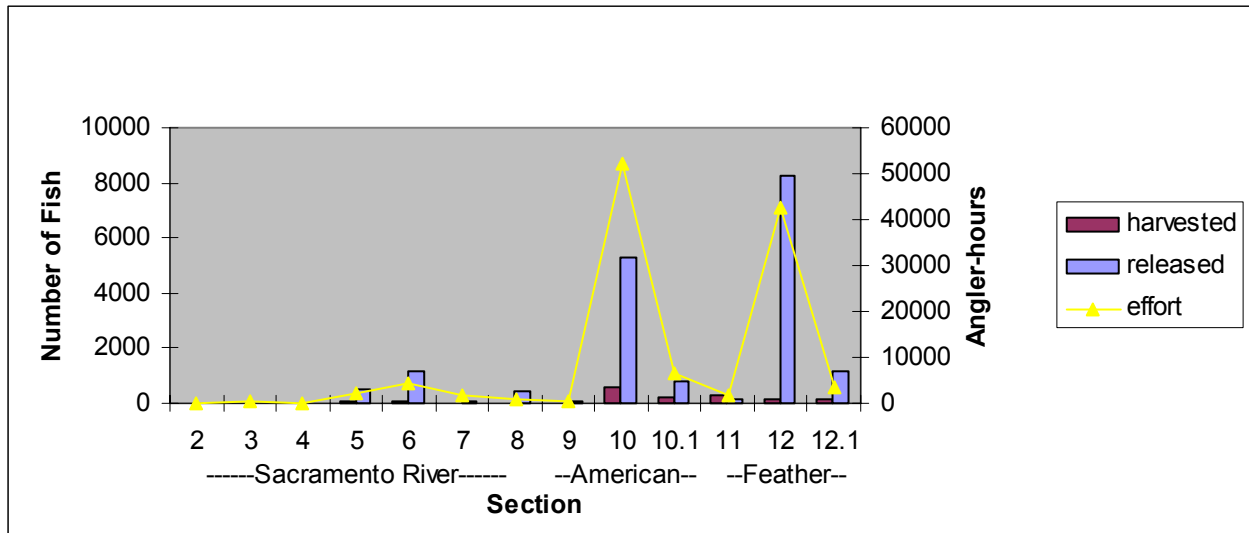


Figure 12. Estimated Number of Steelhead Harvested, Released and Angler-hours Expended for the Sacramento, American and Feather rivers, 2002

# Literature Cited

McEwan, D. 1998. California Department of Fish and Game. Personal communication.

Wixom, L. H., J. Pisciotto, and C. Lake. 1995. Final Performance Report - Sacramento River System Sport Fish Catch Inventory. California Department of Fish and Game, Inland Fisheries Division, 76 p.

## Appendix A:

# Estimated Angler-Hours and Sampling Frequency - 2002

**TOTAL NUMBER OF ANGLER-HOURS**

River:	Sacramento				American				Feather			Yuba		San Joaquin		Mokelumne	Stanislaus	TOTAL	
Section No.:	2	3	4	5	6	7	8	9	10	10.1	11	12	12.1	13	14	15	16,17	18	TOTAL
January	19,371	3,973	7,168	129	1,183	3,603	4,782												40,209
February	32,874	12,054	16,507		1,570	2,036		1,240	17,843	2,567	2,607	2,159	0						91,457
March	73,213	18,373	20,646		1,535	1,668		1,564	7,900	962	28,367	2,781	489	214	4,108				161,820
April	111,803	36,751	75,085		3,014	3,655		2,798	6,306	928	18,101	2,582	634	384	3,854				265,896
May	51,309	29,012	35,067		4,357	3,071		5,568	15,080	1,133	14,232	3,779	2,450	1,195	3,865				170,117
June	29,028	13,297	12,196					3,293	18,897	8,794	10,781	12,032	17,748						126,066
July	48,281	25,020	13,862	15,694	19,659	6,013	5,285	5,158	10,653	17,987	27,347	29,699	54,022						278,680
August	121,171	37,886	54,599	45,921	63,665	17,193	7,514	7,687	15,020	32,552	29,683	60,380	50,787						544,057
September	176,181	41,332	30,918	36,994	47,224	35,191	15,218	8,896	30,360	26,836	28,980	63,666	34,757						576,555
October	225,541	44,795	13,568	14,591	17,244	56,723	16,274	13,492	117,514	15,029	13,992	30,307	20,116						599,187
November	26,436	7,624	7,780	15,384	9,447	15,006	9,584	2,554	27,975	11,057	5,662	15,163	1,408						155,078
December	14,392	2,307	2,313	3,927	2,190	2,667	2,735	537	8,712	5,095	1,149	4,054	484						50,562
<b>TOTAL:</b>	<b>929,601</b>	<b>272,424</b>	<b>289,710</b>	<b>132,642</b>	<b>171,088</b>	<b>146,826</b>	<b>61,391</b>	<b>52,788</b>	<b>276,260</b>	<b>122,939</b>	<b>180,901</b>	<b>226,602</b>	<b>182,895</b>	<b>1,793</b>	<b>11,826</b>	<b>0</b>	<b>0</b>	<b>0</b>	<b>3,059,685</b>

**TOTAL NUMBER OF SAMPLE-DAYS**

River:	Sacramento				American				Feather			Yuba		San Joaquin		Mokelumne	Stanislaus	TOTAL	
Section No.:	2	3	4	5	6	7	8	9	10	10.1	11	12	12.1	13	14	15	16,17	18	TOTAL
January	7	8	8	5	5	6	7												46
February	8	8	8		7	7		8	7	7	8	6	6						80
March	8	8	7		8	7		8	8	8	8	7	7	7	7				98
April	8	8	6		7	7		8	8	8	8	7	7	7	7				96
May	7	8	7		7	7		8	7	7	7	6	6	6	6				89
June	7	8	8					8	8	8	8	8	8						71
July	7	8	6	7	7	8	7	8	8	8	8	7	8						97
August	6	6	8	7	7	7	7	6	8	8	8	7	7						92
September	8	8	8	7	7	6	8	8	8	8	8	7	7						98
October	6	8	8	6	7	6	7	8	7	7	8	5	5						88
November	7	8	8	7	7	6	7	8	6	6	8	6	6						90
December	8	8	8	7	8	6	6	8	8	8	8	5	5						93
<b>TOTAL:</b>	<b>87</b>	<b>94</b>	<b>90</b>	<b>46</b>	<b>77</b>	<b>73</b>	<b>49</b>	<b>86</b>	<b>83</b>	<b>83</b>	<b>87</b>	<b>71</b>	<b>72</b>	<b>20</b>	<b>20</b>	<b>0</b>	<b>0</b>	<b>0</b>	<b>1,038</b>



## Appendix B:

# Estimated Harvest, Released and Angler-Hours by Target Species - 2002

CHINOOK SALMON

TOTAL ESTIMATED HARVEST

River:	Sacramento							American			Feather		Yuba		San Joaquin	Mokelumne	Stanislaus	TOTAL	
Section No.:	2	3	4	5	6	7	8	9	10	10.1	11	12	12.1	13	14	15	16,17	18	TOTAL
January	0	0	0	0	0	217	0	0	0	0	0	0	0	0	0	0	0	0	217
February	0	0	0	0	0	0	0	0	0	0	33	0	0	0	0	0	0	0	33
March	0	0	0	0	0	0	0	0	0	0	0	0	0	0	0	0	0	0	0
April	0	0	0	0	0	0	0	0	0	0	0	0	0	0	0	0	0	0	0
May	0	0	0	0	0	0	0	0	0	0	175	0	96	0	0	0	0	0	271
June	0	0	0	0	0	0	0	0	0	430	172	385	1,017	0	0	0	0	0	2,005
July	326	318	371	223	486	21	0	92	0	850	667	1,301	2,330	0	0	0	0	0	6,984
August	2,035	537	3,121	2,376	4,618	571	0	43	30	2,946	1,403	3,855	5,906	0	0	0	0	0	27,441
September	4,891	915	1,770	2,990	3,768	2,045	0	240	1,107	2,615	1,757	5,491	3,530	0	0	0	0	0	31,118
October	12,403	1,502	324	723	740	4,390	0	632	8,372	2,180	734	2,016	2,308	0	0	0	0	0	36,325
November	412	70	207	592	263	244	0	100	1,488	2,136	285	0	0	0	0	0	0	0	5,797
December	0	23	27	299	23	251	0	0	0	74	0	0	0	0	0	0	0	0	696
TOTAL:	20,067	3,366	5,818	7,203	9,899	7,738	0	1,107	10,997	11,231	5,226	13,049	15,186	0	0	0	0	0	110,887

TOTAL ESTIMATED RELEASED

River:	Sacramento							American			Feather		Yuba		San Joaquin	Mokelumne	Stanislaus	TOTAL	
Section No.:	2	3	4	5	6	7	8	9	10	10.1	11	12	12.1	13	14	15	16,17	18	TOTAL
January	0	0	0	0	0	0	0	0	0	0	0	0	0	0	0	0	0	0	0
February	0	0	0	0	0	0	0	0	0	0	0	0	0	0	0	0	0	0	0
March	0	0	0	0	0	0	0	0	0	0	0	0	0	0	0	0	0	0	0
April	0	0	0	0	0	0	0	0	0	0	0	0	0	0	0	0	0	0	0
May	0	0	0	0	0	0	0	0	0	0	0	0	0	0	0	0	0	0	0
June	0	0	0	0	0	0	0	0	0	61	0	51	200	0	0	0	0	0	313
July	0	49	0	0	54	0	0	0	0	386	63	491	270	0	0	0	0	0	1,312
August	0	30	0	653	87	0	0	43	0	4,311	291	2,860	1,442	0	0	0	0	0	9,717
September	425	114	0	580	936	212	0	48	295	299	807	4,436	1,201	0	0	0	0	0	9,354
October	1,521	429	0	353	166	736	0	703	9,378	671	624	390	1,198	0	0	0	0	0	16,170
November	82	50	10	154	213	43	0	138	3,200	5,485	617	0	0	0	0	0	0	0	9,993
December	0	0	0	31	8	17	0	0	0	184	0	0	0	0	0	0	0	0	240
TOTAL:	2,029	673	10	1,772	1,464	1,008	0	931	12,873	11,398	2,402	8,229	4,311	0	0	0	0	0	47,099

ESTIMATED ANGLER-HOURS

River:	Sacramento							American			Feather		Yuba		San Joaquin	Mokelumne	Stanislaus	TOTAL	
Section No.:	2	3	4	5	6	7	8	9	10	10.1	11	12	12.1	13	14	15	16,17	18	TOTAL
January	0	0	0	123	402	3,024	0	0	0	0	81	0	0	0	0	0	0	0	3,548
February	0	0	0	0	0	0	0	0	0	0	0	0	0	0	0	0	0	0	81
March	0	0	0	0	0	0	0	0	0	0	0	0	0	0	0	0	0	0	0
April	0	0	0	0	0	0	0	0	31	12	0	0	317	0	0	0	0	0	360
May	0	0	0	0	0	0	0	0	0	115	928	93	2,202	0	0	0	0	0	3,338
June	0	0	10	0	0	0	0	0	246	4,735	6,761	10,022	17,135	0	0	0	0	0	38,909
July	20,516	16,904	10,043	10,176	17,556	1,399	0	3,190	1,660	17,736	19,378	27,495	53,107	0	0	0	0	0	199,160
August	97,906	35,135	50,405	42,941	63,305	12,142	0	4,214	7,922	32,552	26,796	59,273	50,787	0	0	0	0	0	483,377
September	163,147	38,622	29,999	35,983	46,497	29,925	0	7,202	23,126	26,762	26,498	60,226	34,634	0	0	0	0	0	522,618
October	214,088	43,178	11,530	13,207	11,729	47,302	0	13,211	107,895	14,715	13,335	15,072	18,951	0	0	0	0	0	524,215
November	12,690	3,552	5,189	13,595	6,038	9,714	0	2,023	16,973	10,797	1,828	0	0	0	0	0	0	0	82,400
December	148	545	314	3,900	1,724	2,642	0	0	450	2,207	84	0	0	0	0	0	0	0	12,014
TOTAL:	508,495	137,937	107,490	119,925	147,251	106,147	0	29,839	158,304	109,630	95,689	172,181	177,134	0	0	0	0	0	1,870,023

STEELHEAD

TOTAL ESTIMATED HARVEST

River:	Sacramento							American			Feather		Yuba		San Joaquin	Mokelumne	Stanislaus	TOTAL	
Section No.:	2	3	4	5	6	7	8	9	10	10.1	11	12	12.1	13	14	15	16,17	18	TOTAL
January	0	0	0	0	60	0	0	0	0	0	0	0	0	0	0	0	0	0	60
February	0	0	0	0	0	0	0	0	294	158	0	0	0	0	0	0	0	0	452
March	0	0	0	0	0	0	0	0	85	0	0	0	0	0	0	0	0	0	85
April	0	0	0	0	0	0	0	0	0	0	0	0	106	0	0	0	0	0	106
May	0	0	0	0	0	0	0	0	0	0	0	0	0	0	0	0	0	0	0
June	0	0	0	0	0	0	0	0	0	0	0	26	0	0	0	0	0	0	26
July	0	0	0	0	0	0	0	0	0	0	0	0	0	0	0	0	0	0	0
August	0	0	0	0	0	0	0	0	0	0	0	0	0	0	0	0	0	0	0
September	0	0	0	0	0	0	0	0	25	0	36	24	0	0	0	0	0	0	84
October	0	0	0	18	15	0	0	0	0	0	0	33	44	0	0	0	0	0	110
November	0	10	0	77	16	0	0	0	99	0	237	0	30	0	0	0	0	0	470
December	0	0	0	0	0	0	0	0	71	74	0	75	0	0	0	0	0	0	220
TOTAL:	0	10	0	95	91	0	0	0	574	232	273	158	180	0	0	0	0	0	1,612

TOTAL ESTIMATED RELEASED

River:	Sacramento							American			Feather		Yuba		San Joaquin	Mokelumne	Stanislaus	TOTAL	
Section No.:	2	3	4	5	6	7	8	9	10	10.1	11	12	12.1	13	14	15	16,17	18	TOTAL
January	0	0	0	0	30	0	0	0	0	0	0	0	0	0	0	0	0	0	30
February	0	0	0	0	0	0	0	0	1,818	237	0	388	0	0	0	0	0	0	2,443
March	0	0	0	0	0	0	0	0	978	344	0	280	0	0	0	0	0	0	1,602
April	0	0	0	0	0	0	0	0	82	0	0	116	0	0	0	0	0	0	199
May	0	0	0	0	0	0	0	46	0	0	0	53	0	0	0	0	0	0	99
June	0	0	0	0	0	0	0	0	0	0	0	77	0	0	0	0	0	0	77
July	0	0	0	0	0	0	0	0	0	0	0	0	0	0	0	0	0	0	0
August	0	0	0	0	0	0	0	0	0	0	0	50	0	0	0	0	0	0	50
September	0	0	0	0	0	0	0	0	689	0	0	384	0	0	0	0	0	0	1,073
October	0	0	0	0	408	27	0	0	595	0	0	3,349	666	0	0	0	0	0	5,045
November	0	0	0	489	673	57	0	0	843	0	142	2,260	389	0	0	0	0	0	4,854
December	0	0	0	0	31	0	452	51	261	221	0	1,320	133	0	0	0	0	0	2,468
TOTAL:	0	0	0	489	1,141	85	452	97	5,267	801	142	8,277	1,188	0	0	0	0	0	17,939

ESTIMATED ANGLER-HOURS

River:	Sacramento							American			Feather		Yuba		San Joaquin	Mokelumne	Stanislaus	TOTAL	
Section No.:	2	3	4	5	6	7	8	9	10	10.1	11	12	12.1	13	14	15	16,17	18	TOTAL
January	0	0	0	3	707	10	0	0	0	0	0	0	0	0	0	0	0	0	720
February	0	0	0	0	287	0	0	0	16,236	2,448	41	1,917	0	0	0	0	0	0	20,929
March	0	0	0	0	63	69	0	13	5,401	962	0	2,099	0	0	0	0	0	0	8,607
April	0	0	0	185	0	0	0	0	1,636	470	0	2,037	317	0	0	0	0	0	4,644
May	0	0	0	0	0	0	0	58	97	0	0	1,019	0	0	0	0	0	0	1,174
June	0	0	0	0	0	0	0	0	33	0	86	295	0	0	0	0	0	0	415
July	0	0	0	0	0	0	0	0	83	0	0	80	202	0	0	0	0	0	365
August	0	0	0	0	0	0	0	0	572	0	0	609	0	0	0	0	0	0	1,182
September	0	0	0	88	0	0	0	0	3,064	0	143	1,792	0	0	0	0	0	0	5,087
October	0	0	49	542	1,522	723	0	0	7,308	147	5	14,910	1,032	0	0	0	0	0	26,237
November	0	181	118	1,493	1,440	1,105	53	0	10,009	0	1,282	15,087	1,386	0	0	0	0	0	32,153
December	9	126	0	16	273	0	927	152	7,953	2,667	28	2,791	380	0	0	0	0	0	15,321
TOTAL:	9	307	167	2,141	4,477	1,906	979	222	52,393	6,694	1,585	42,636	3,317	0	0	0	0	0	116,833

**RAINBOW TROUT**

**TOTAL ESTIMATED HARVEST**

River:	Sacramento							American			Feather			Yuba		San Joaquin	Mokelumne	Stanislaus	TOTAL
Section No.:	2	3	4	5	6	7	8	9	10	10.1	11	12	12.1	13	14	15	16,17	18	TOTAL
January	0	0	0	0	0	0	0	0	0	0	0	0	0	0	0	0	0	0	0
February	0	0	0	0	15	14	0	0	0	0	0	0	0	0	0	0	0	0	28
March	0	0	0	0	44	0	0	0	0	0	0	0	0	0	0	0	0	0	44
April	0	0	0	0	34	0	0	0	0	0	0	0	0	0	0	0	0	0	34
May	0	0	0	0	0	0	0	0	0	0	0	0	0	76	0	0	0	0	76
June	0	0	0	0	0	0	0	0	0	0	0	0	0	0	0	0	0	0	0
July	0	0	0	0	0	0	122	0	0	0	0	0	0	0	0	0	0	0	122
August	0	0	0	0	0	46	88	0	0	0	0	0	0	0	0	0	0	0	134
September	0	0	0	0	0	0	58	0	0	0	0	0	0	0	0	0	0	0	58
October	0	0	0	0	45	55	0	0	0	0	0	0	0	0	0	0	0	0	100
November	0	0	0	0	0	115	35	0	0	0	0	0	0	0	0	0	0	0	150
December	0	0	0	0	0	0	0	0	0	0	0	0	0	0	0	0	0	0	0
<b>TOTAL:</b>	<b>0</b>	<b>0</b>	<b>0</b>	<b>0</b>	<b>138</b>	<b>229</b>	<b>303</b>	<b>0</b>	<b>0</b>	<b>0</b>	<b>0</b>	<b>0</b>	<b>0</b>	<b>76</b>	<b>0</b>	<b>0</b>	<b>0</b>	<b>0</b>	<b>745</b>

**TOTAL ESTIMATED RELEASED**

River:	Sacramento							American			Feather			Yuba		San Joaquin	Mokelumne	Stanislaus	TOTAL
Section No.:	2	3	4	5	6	7	8	9	10	10.1	11	12	12.1	13	14	15	16,17	18	TOTAL
January	0	0	0	7	387	366	2,774	0	0	0	0	0	0	0	0	0	0	0	3,534
February	0	0	0	0	1,447	1,192	0	0	0	0	0	0	0	0	0	0	0	0	2,639
March	0	0	0	0	317	688	0	85	0	219	280	0	0	4,424	0	0	0	0	6,013
April	0	0	0	0	202	1,084	0	0	0	0	0	0	0	50	1,714	0	0	0	3,049
May	0	0	0	0	700	2,960	0	0	0	0	132	0	455	758	0	0	0	0	5,005
June	0	0	0	0	0	0	0	0	0	0	51	0	0	0	0	0	0	0	51
July	0	0	0	0	0	2,519	2,927	0	37	0	74	0	0	0	0	0	0	0	5,557
August	0	0	0	0	0	5,074	4,628	0	37	0	75	0	0	0	0	0	0	0	9,814
September	0	0	0	0	130	2,276	10,863	0	0	0	1,031	0	0	0	0	0	0	0	14,300
October	0	0	0	0	1,027	7,853	8,456	0	0	0	0	0	0	0	0	0	0	0	17,337
November	0	0	0	0	541	890	2,970	0	0	0	0	0	0	0	0	0	0	0	4,402
December	0	0	0	0	31	0	1,311	0	0	0	1,697	0	0	0	0	0	0	0	3,038
<b>TOTAL:</b>	<b>0</b>	<b>0</b>	<b>0</b>	<b>7</b>	<b>4,782</b>	<b>24,901</b>	<b>33,930</b>	<b>0</b>	<b>159</b>	<b>0</b>	<b>219</b>	<b>3,340</b>	<b>0</b>	<b>505</b>	<b>6,896</b>	<b>0</b>	<b>0</b>	<b>0</b>	<b>74,739</b>

**ESTIMATED ANGLER-HOURS**

River:	Sacramento							American			Feather			Yuba		San Joaquin	Mokelumne	Stanislaus	TOTAL
Section No.:	2	3	4	5	6	7	8	9	10	10.1	11	12	12.1	13	14	15	16,17	18	TOTAL
January	0	0	0	4	74	569	4,778	0	0	0	0	49	0	0	0	0	0	0	5,425
February	0	0	0	0	1,283	1,785	0	235	46	0	0	0	0	0	0	0	0	0	3,398
March	0	0	0	0	974	1,475	0	104	255	0	438	367	0	71	4,108	0	0	0	7,792
April	0	0	0	0	1,142	3,429	0	136	504	235	0	65	0	62	3,846	0	0	0	9,419
May	0	0	0	0	668	3,029	0	0	396	0	0	675	0	417	3,865	0	0	0	9,049
June	0	0	0	0	0	0	0	211	266	215	0	507	0	0	0	0	0	0	1,199
July	0	0	0	5	18	4,532	5,244	92	528	116	0	160	0	0	0	0	0	0	10,695
August	0	0	0	69	78	4,937	7,514	0	230	0	0	62	0	0	0	0	0	0	12,891
September	0	0	0	0	435	5,112	15,059	0	185	0	0	1,013	123	0	0	0	0	0	21,926
October	0	0	0	0	2,112	8,467	16,259	0	0	168	0	0	0	0	0	0	0	0	27,005
November	0	0	0	0	993	3,774	9,531	0	143	0	24	50	0	0	0	0	0	0	14,514
December	0	0	0	0	65	8	1,808	0	160	0	112	867	0	0	0	0	0	0	3,021
<b>TOTAL:</b>	<b>0</b>	<b>0</b>	<b>0</b>	<b>78</b>	<b>7,842</b>	<b>37,115</b>	<b>60,193</b>	<b>777</b>	<b>2,713</b>	<b>734</b>	<b>573</b>	<b>3,816</b>	<b>123</b>	<b>551</b>	<b>11,818</b>	<b>0</b>	<b>0</b>	<b>0</b>	<b>126,334</b>

AMERICAN SHAD

TOTAL ESTIMATED HARVEST

River:	Sacramento							American			Feather			Yuba		San Joaquin	Mokelumne	Stanislaus	TOTAL
Section No.:	2	3	4	5	6	7	8	9	10	10.1	11	12	12.1	13	14	15	16,17	18	TOTAL
January	0	0	0	0	0	0	0	0	0	0	0	0	0	0	0	0	0	0	0
February	0	0	0	0	0	0	0	0	0	0	0	0	0	0	0	0	0	0	0
March	0	0	0	0	0	0	0	0	0	0	0	0	0	0	0	0	0	0	0
April	19,811	85	0	0	0	0	0	0	0	0	713	0	0	0	0	0	0	0	20,609
May	16,700	2,634	318	0	0	0	0	599	2,288	0	3,013	0	0	0	0	0	0	0	25,551
June	5,750	127	0	0	0	0	0	28	1,197	984	172	26	67	0	0	0	0	0	8,352
July	0	0	0	0	0	0	0	0	74	0	0	0	58	0	0	0	0	0	132
August	0	0	0	0	0	0	0	0	0	0	0	0	0	0	0	0	0	0	0
September	0	0	0	0	0	0	0	0	0	0	0	0	0	0	0	0	0	0	0
October	0	0	0	0	0	0	0	0	0	0	0	0	0	0	0	0	0	0	0
November	0	0	0	0	0	0	0	0	0	0	0	0	0	0	0	0	0	0	0
December	0	0	0	0	0	0	0	0	0	0	0	0	0	0	0	0	0	0	0
TOTAL:	42,261	2,847	318	0	0	0	0	627	3,559	984	3,897	26	124	0	0	0	0	0	54,643

TOTAL ESTIMATED RELEASED

River:	Sacramento							American			Feather			Yuba		San Joaquin	Mokelumne	Stanislaus	TOTAL
Section No.:	2	3	4	5	6	7	8	9	10	10.1	11	12	12.1	13	14	15	16,17	18	TOTAL
January	0	0	0	0	0	0	0	0	0	0	0	0	0	0	0	0	0	0	0
February	0	0	0	0	0	0	0	0	0	0	0	0	0	0	0	0	0	0	0
March	0	0	0	0	0	0	0	0	0	0	0	0	0	0	0	0	0	0	0
April	125	513	0	0	0	0	0	0	0	0	0	0	0	0	0	0	0	0	638
May	387	6,957	95	0	700	0	0	507	7,144	1,305	3,994	26	0	0	0	0	0	0	21,116
June	477	306	0	0	0	0	0	56	4,124	492	19	26	0	0	0	0	0	0	5,500
July	0	0	0	20	414	0	0	0	260	0	0	0	39	0	0	0	0	0	733
August	0	0	0	0	0	0	0	0	260	0	0	0	0	0	0	0	0	0	260
September	0	0	0	0	0	0	0	0	0	0	0	0	0	0	0	0	0	0	0
October	0	0	0	0	0	0	0	0	0	0	0	0	0	0	0	0	0	0	0
November	0	0	0	0	0	0	0	0	0	0	0	0	0	0	0	0	0	0	0
December	0	0	0	0	0	0	0	0	0	0	0	0	0	0	0	0	0	0	0
TOTAL:	990	7,776	95	20	1,114	0	0	563	11,787	1,797	4,013	52	39	0	0	0	0	0	28,246

ESTIMATED ANGLER-HOURS

River:	Sacramento							American			Feather			Yuba		San Joaquin	Mokelumne	Stanislaus	TOTAL
Section No.:	2	3	4	5	6	7	8	9	10	10.1	11	12	12.1	13	14	15	16,17	18	TOTAL
January	0	0	0	0	0	0	0	0	0	0	0	0	0	0	0	0	0	0	0
February	0	0	0	0	0	0	0	0	0	0	0	0	0	0	0	0	0	0	0
March	0	0	0	0	0	0	0	0	0	0	0	0	0	0	0	0	0	0	0
April	19,450	863	0	0	0	0	0	0	41	0	499	0	0	0	0	0	0	0	20,853
May	20,138	10,398	223	0	2,830	0	0	3,121	12,731	864	8,390	265	88	114	0	0	0	0	59,162
June	5,104	1,439	10	0	0	0	0	204	11,481	1,968	287	244	46	0	0	0	0	0	20,781
July	0	0	0	86	432	0	0	0	621	0	0	0	539	0	0	0	0	0	1,678
August	0	0	0	0	0	0	0	0	0	0	0	0	0	0	0	0	0	0	0
September	0	0	0	0	0	0	0	0	0	0	0	0	0	0	0	0	0	0	0
October	0	0	0	0	0	0	0	0	0	0	0	0	0	0	0	0	0	0	0
November	0	0	0	0	0	0	0	0	0	0	0	0	0	0	0	0	0	0	0
December	0	0	0	0	0	0	0	0	0	0	0	0	0	0	0	0	0	0	0
TOTAL:	44,692	12,700	233	86	3,263	0	0	3,325	24,874	2,832	9,176	509	673	114	0	0	0	0	102,475

STRIPED BASS

TOTAL ESTIMATED HARVEST

River:	Sacramento							American			Feather			Yuba	San Joaquin	Mokelumne	Stanislaus	TOTAL	
Section No.:	2	3	4	5	6	7	8	9	10	10.1	11	12	12.1	13	14	15	16,17	18	TOTAL
January	11	6	0	0	0	0	0	0	0	0	0	0	0	0	0	0	0	0	17
February	45	0	0	0	0	0	0	0	0	0	33	0	0	0	0	0	0	0	78
March	941	257	32	0	0	0	0	0	0	0	1,094	0	0	0	0	0	0	0	2,324
April	2,226	1,435	3,777	0	0	0	0	22	41	0	641	0	0	0	0	0	0	0	8,142
May	1,201	321	2,210	0	0	0	0	0	70	0	105	0	0	0	0	0	0	0	3,908
June	578	178	498	0	0	0	0	28	186	0	134	0	0	0	0	0	0	0	1,602
July	398	24	135	263	54	0	0	46	74	0	146	0	0	0	0	0	0	0	1,141
August	339	30	42	79	0	0	0	0	89	0	17	0	0	0	0	0	0	0	596
September	128	0	11	53	0	0	0	24	123	0	0	0	0	0	0	0	0	0	338
October	0	0	0	35	0	0	0	0	0	0	0	0	0	0	0	0	0	0	35
November	99	0	0	0	0	0	0	0	0	0	0	0	0	0	0	0	0	0	99
December	92	11	0	0	0	0	0	51	0	0	0	0	0	0	0	0	0	0	154
TOTAL:	6,058	2,263	6,705	430	54	0	0	170	584	0	2,170	0	0	0	0	0	0	0	18,434

TOTAL ESTIMATED RELEASED

River:	Sacramento							American			Feather			Yuba	San Joaquin	Mokelumne	Stanislaus	TOTAL	
Section No.:	2	3	4	5	6	7	8	9	10	10.1	11	12	12.1	13	14	15	16,17	18	TOTAL
January	0	12	0	0	0	0	0	0	0	0	0	0	0	0	0	0	0	0	12
February	68	53	13	0	0	0	0	20	0	0	65	0	0	0	0	0	0	0	218
March	1,846	231	8	0	0	0	0	65	0	0	1,167	0	0	0	0	0	0	0	3,316
April	9,937	4,254	5,036	0	25	0	0	87	0	0	820	0	0	0	0	0	0	0	20,159
May	8,059	3,006	3,291	0	0	0	0	184	35	0	841	0	0	0	0	0	0	0	15,416
June	10,999	5,271	4,480	0	0	0	0	730	506	0	1,109	0	0	0	0	0	0	0	23,094
July	12,054	3,033	1,585	3,358	198	0	0	344	853	0	2,001	0	0	0	0	0	0	0	23,428
August	5,767	865	503	614	0	0	0	1,244	853	0	257	0	0	0	0	0	0	0	10,101
September	2,594	529	86	193	0	0	0	360	320	0	108	0	0	0	0	0	0	0	4,190
October	819	134	246	18	0	0	0	23	91	0	0	0	0	0	0	0	0	0	1,332
November	1,319	291	10	0	0	0	0	0	0	0	0	0	0	0	0	0	0	0	1,621
December	591	11	0	0	0	0	0	0	0	0	0	0	0	0	0	0	0	0	603
TOTAL:	54,053	17,691	15,258	4,183	198	25	0	3,058	2,658	0	6,367	0	0	0	0	0	0	0	103,492

ESTIMATED ANGLER-HOURS

River:	Sacramento							American			Feather			Yuba	San Joaquin	Mokelumne	Stanislaus	TOTAL	
Section No.:	2	3	4	5	6	7	8	9	10	10.1	11	12	12.1	13	14	15	16,17	18	TOTAL
January	294	204	0	0	0	0	0	0	0	0	0	0	0	0	0	0	0	0	498
February	6,893	2,503	87	0	0	0	0	794	560	0	1,931	0	0	0	0	0	0	0	12,767
March	30,321	11,658	1,468	0	0	0	0	1,379	1,116	0	21,841	0	0	0	0	0	0	0	67,783
April	85,363	33,223	70,006	0	118	50	0	1,862	2,911	47	15,135	0	0	0	0	0	0	0	208,715
May	23,529	15,042	32,634	0	0	0	0	1,514	1,672	115	2,873	205	0	0	0	0	0	0	77,584
June	19,103	9,192	10,718	0	0	0	0	1,685	5,514	61	2,257	0	100	0	0	0	0	0	48,630
July	17,810	3,419	3,423	4,668	1,126	0	0	1,354	4,636	0	4,628	123	173	0	0	0	0	0	41,360
August	13,894	1,268	1,901	2,010	95	0	0	1,651	4,333	0	505	0	0	0	0	0	0	0	25,656
September	8,941	1,441	311	748	26	0	0	1,159	3,008	0	408	0	0	0	0	0	0	0	16,042
October	7,211	382	440	507	113	0	0	70	1,613	0	18	0	0	0	0	0	0	0	10,355
November	8,650	1,625	286	0	98	0	0	88	43	0	0	0	0	0	0	0	0	0	10,790
December	3,150	437	0	4	0	0	0	266	59	0	280	19	0	0	0	0	0	0	4,215
TOTAL:	225,158	80,392	121,274	7,937	1,576	50	0	11,822	25,466	224	49,875	347	273	0	0	0	0	0	524,394

**CATFISH (all species)**

**TOTAL ESTIMATED HARVEST**

River:	Sacramento							American			Feather			Yuba		San Joaquin	Mokelumne	Stanislaus	TOTAL
Section No.:	2	3	4	5	6	7	8	9	10	10.1	11	12	12.1	13	14	15	16,17	18	TOTAL
January	21	0	0	0	0	0	0	0	0	0	0	0	0	0	0	0	0	0	21
February	0	238	19	0	0	0	0	0	0	0	0	0	0	0	0	0	0	0	257
March	18	231	0	0	0	0	0	0	0	0	0	0	0	0	0	0	0	0	249
April	0	154	97	0	0	0	0	0	0	0	0	0	0	0	0	0	0	0	251
May	852	186	0	0	0	0	0	0	0	0	35	0	0	0	0	0	0	0	1,073
June	25	102	41	0	0	0	0	0	0	0	0	0	0	0	0	0	0	0	168
July	471	269	34	0	0	0	0	0	0	0	125	0	0	0	0	0	0	0	899
August	170	30	147	0	0	0	0	0	0	0	51	0	0	0	0	0	0	0	397
September	425	400	21	0	0	0	0	0	0	0	0	0	0	0	0	0	0	0	847
October	117	134	39	0	0	0	0	0	0	0	0	0	0	0	0	0	0	0	290
November	66	60	0	0	0	0	0	0	0	0	0	0	0	0	0	0	0	0	126
December	259	11	0	0	0	0	0	0	0	0	56	0	0	0	0	0	0	0	326
<b>TOTAL:</b>	<b>2,424</b>	<b>1,816</b>	<b>398</b>	<b>0</b>	<b>0</b>	<b>0</b>	<b>0</b>	<b>0</b>	<b>0</b>	<b>0</b>	<b>267</b>	<b>0</b>	<b>0</b>	<b>0</b>	<b>0</b>	<b>0</b>	<b>0</b>	<b>0</b>	<b>4,906</b>

**TOTAL ESTIMATED RELEASED**

River:	Sacramento							American			Feather			Yuba		San Joaquin	Mokelumne	Stanislaus	TOTAL
Section No.:	2	3	4	5	6	7	8	9	10	10.1	11	12	12.1	13	14	15	16,17	18	TOTAL
January	0	6	0	0	0	0	0	0	0	0	0	0	0	0	0	0	0	0	6
February	23	35	6	0	0	0	0	0	0	0	0	0	0	0	0	0	0	0	64
March	55	0	16	0	0	0	0	0	0	0	0	0	0	0	0	0	0	0	71
April	0	0	97	0	0	0	0	87	0	0	0	0	0	0	0	0	0	0	184
May	0	169	0	0	0	0	0	0	0	0	0	0	0	0	0	0	0	0	169
June	0	356	0	0	0	0	0	0	0	0	0	0	0	0	0	0	0	0	356
July	72	122	0	0	0	0	0	0	0	0	104	0	0	0	0	0	0	0	299
August	0	0	147	0	0	0	0	0	0	0	0	0	0	0	0	0	0	0	147
September	0	0	21	0	0	0	0	0	0	0	0	0	0	0	0	0	0	0	21
October	0	0	0	0	0	0	0	0	0	0	0	0	0	0	0	0	0	0	0
November	82	50	0	0	0	0	0	0	0	0	0	0	0	0	0	0	0	0	133
December	0	0	0	0	0	0	0	0	0	0	0	0	0	0	0	0	0	0	0
<b>TOTAL:</b>	<b>233</b>	<b>739</b>	<b>287</b>	<b>0</b>	<b>0</b>	<b>0</b>	<b>0</b>	<b>87</b>	<b>0</b>	<b>0</b>	<b>104</b>	<b>0</b>	<b>0</b>	<b>0</b>	<b>0</b>	<b>0</b>	<b>0</b>	<b>0</b>	<b>1,451</b>

**ESTIMATED ANGLER-HOURS**

River:	Sacramento							American			Feather			Yuba		San Joaquin	Mokelumne	Stanislaus	TOTAL
Section No.:	2	3	4	5	6	7	8	9	10	10.1	11	12	12.1	13	14	15	16,17	18	TOTAL
January	286	41	92	0	0	0	0	0	0	0	0	0	0	0	0	0	0	0	418
February	588	1,240	567	0	0	0	0	0	0	0	0	0	0	0	0	0	0	0	2,395
March	1,283	295	420	0	0	0	0	0	0	0	802	0	0	0	0	0	0	0	2,800
April	204	850	1,659	0	50	0	0	87	0	0	392	305	0	0	0	0	0	0	3,547
May	3,768	1,663	76	0	16	0	0	0	0	0	140	397	0	19	0	0	0	0	6,079
June	929	961	684	0	0	0	0	0	120	0	258	64	0	0	0	0	0	0	3,017
July	5,077	1,688	143	40	0	0	0	0	37	0	1,334	110	0	0	0	0	0	0	8,431
August	2,587	1,074	1,387	79	0	0	0	386	0	0	436	0	0	0	0	0	0	0	5,949
September	2,881	558	464	4	58	0	0	48	12	0	556	0	0	0	0	0	0	0	4,582
October	1,609	533	812	44	0	0	0	12	91	0	18	0	0	0	0	0	0	0	3,120
November	355	502	103	0	0	0	0	0	0	0	142	0	0	0	0	0	0	0	1,103
December	684	197	8	0	0	0	0	0	0	0	238	0	0	0	0	0	0	0	1,127
<b>TOTAL:</b>	<b>20,249</b>	<b>9,603</b>	<b>6,415</b>	<b>168</b>	<b>125</b>	<b>0</b>	<b>0</b>	<b>533</b>	<b>261</b>	<b>0</b>	<b>4,318</b>	<b>877</b>	<b>0</b>	<b>19</b>	<b>0</b>	<b>0</b>	<b>0</b>	<b>0</b>	<b>42,567</b>

SUNFISH (all species)

TOTAL ESTIMATED HARVEST

River:	Sacramento							American			Feather			Yuba		San Joaquin	Mokelumne	Stanislaus	TOTAL
Section No.:	2	3	4	5	6	7	8	9	10	10.1	11	12	12.1	13	14	15	16,17	18	TOTAL
January	0	0	0	0	0	0	0	0	0	0	0	0	0	0	0	0	0	0	0
February	0	0	0	0	0	0	0	0	0	0	0	0	0	0	0	0	0	0	0
March	0	0	0	0	0	0	0	0	0	0	0	0	0	0	0	0	0	0	0
April	0	0	0	0	0	0	0	0	0	0	0	0	0	0	0	0	0	0	0
May	77	0	0	0	0	0	0	0	0	0	0	0	0	0	0	0	0	0	77
June	0	0	0	0	0	0	0	0	0	0	0	0	0	0	0	0	0	0	0
July	0	0	0	0	0	0	0	0	0	0	0	0	0	0	0	0	0	0	0
August	0	0	0	0	0	0	0	0	0	0	0	0	0	0	0	0	0	0	0
September	0	0	0	0	0	0	0	0	0	0	0	0	0	0	0	0	0	0	0
October	0	40	582	0	0	0	0	0	0	0	0	0	0	0	0	0	0	0	623
November	0	0	79	0	0	0	0	0	0	0	0	0	0	0	0	0	0	0	79
December	0	0	16	0	0	0	0	0	0	0	0	0	0	0	0	0	0	0	16
TOTAL:	77	40	677	0	0	0	0	0	0	0	0	0	0	0	0	0	0	0	795

TOTAL ESTIMATED RELEASED

River:	Sacramento							American			Feather			Yuba		San Joaquin	Mokelumne	Stanislaus	TOTAL
Section No.:	2	3	4	5	6	7	8	9	10	10.1	11	12	12.1	13	14	15	16,17	18	TOTAL
January	0	0	0	0	0	0	0	0	0	0	0	0	0	0	0	0	0	0	0
February	0	0	0	0	0	0	0	0	0	0	0	0	0	0	0	0	0	0	0
March	0	0	0	0	0	0	0	0	0	0	0	0	0	0	0	0	0	0	0
April	0	0	0	0	0	0	0	0	0	0	0	0	0	0	0	0	0	0	0
May	0	0	0	0	0	0	0	0	0	0	0	0	0	0	0	0	0	0	0
June	0	0	0	0	0	0	0	0	0	0	0	0	0	0	0	0	0	0	0
July	0	0	0	0	0	0	0	0	0	0	0	0	0	0	0	0	0	0	0
August	0	0	0	0	0	0	0	0	0	0	0	0	0	0	0	0	0	0	0
September	0	0	0	0	0	0	0	0	0	0	0	0	0	0	0	0	0	0	0
October	0	0	26	0	0	0	0	0	0	0	0	0	0	0	0	0	0	0	26
November	0	0	0	0	0	0	0	0	0	0	95	0	0	0	0	0	0	0	95
December	0	0	0	0	0	0	0	0	0	0	0	0	0	0	0	0	0	0	0
TOTAL:	0	0	26	0	0	0	0	0	0	0	95	0	0	0	0	0	0	0	121

ESTIMATED ANGLER-HOURS

River:	Sacramento							American			Feather			Yuba		San Joaquin	Mokelumne	Stanislaus	TOTAL
Section No.:	2	3	4	5	6	7	8	9	10	10.1	11	12	12.1	13	14	15	16,17	18	TOTAL
January	0	0	0	0	0	0	0	0	0	0	0	0	0	0	0	0	0	0	0
February	0	0	0	0	0	0	0	0	0	0	0	0	0	0	0	0	0	0	0
March	0	0	0	0	0	0	0	0	0	0	0	0	0	0	0	0	0	0	0
April	0	17	0	0	0	0	0	0	0	0	0	0	0	0	0	0	0	0	17
May	19	0	0	0	0	0	0	0	0	0	0	0	0	0	0	0	0	0	19
June	0	0	0	0	0	0	0	0	0	0	0	0	0	0	0	0	0	0	0
July	36	0	0	0	0	0	0	0	0	0	0	0	0	0	0	0	0	0	36
August	28	0	0	0	0	0	0	0	0	0	0	0	0	0	0	0	0	0	28
September	43	0	0	0	0	0	0	0	0	0	0	0	0	0	0	0	0	0	43
October	0	40	246	0	0	0	0	0	0	0	18	0	0	0	0	0	0	0	304
November	0	0	20	0	0	0	0	0	0	0	47	0	0	0	0	0	0	0	67
December	0	0	8	0	0	0	0	0	0	0	0	0	0	0	0	0	0	0	8
TOTAL:	126	57	274	0	0	0	0	0	0	0	66	0	0	0	0	0	0	0	523



**BLACK BASS (all species)**

**TOTAL ESTIMATED HARVEST**

River:	Sacramento							American			Feather			Yuba		San Joaquin	Mokelumne	Stanislaus	TOTAL
Section No.:	2	3	4	5	6	7	8	9	10	10.1	11	12	12.1	13	14	15	16,17	18	TOTAL
January	0	0	0	0	0	0	0	0	0	0	0	0	0	0	0	0	0	0	0
February	0	0	0	0	0	0	0	0	0	0	0	0	0	0	0	0	0	0	0
March	0	0	0	0	0	0	0	13	0	0	0	0	0	0	0	0	0	0	13
April	63	0	0	0	0	0	0	0	0	0	249	0	0	0	0	0	0	0	312
May	39	0	0	0	0	0	0	0	0	0	35	0	0	0	0	0	0	0	74
June	0	0	0	0	0	0	0	0	0	0	0	0	0	0	0	0	0	0	0
July	0	0	0	0	0	0	0	0	0	0	0	49	0	0	0	0	0	0	49
August	0	0	0	0	0	0	0	0	0	0	0	0	0	0	0	0	0	0	0
September	43	0	0	0	0	0	0	0	0	0	18	0	0	0	0	0	0	0	60
October	59	27	0	0	0	0	0	0	0	0	18	0	0	0	0	0	0	0	104
November	16	80	0	0	0	0	0	0	0	0	142	0	0	0	0	0	0	0	239
December	0	0	0	0	0	0	0	0	0	0	0	0	0	0	0	0	0	0	0
<b>TOTAL:</b>	<b>219</b>	<b>107</b>	<b>0</b>	<b>0</b>	<b>0</b>	<b>0</b>	<b>0</b>	<b>13</b>	<b>0</b>	<b>0</b>	<b>463</b>	<b>49</b>	<b>0</b>	<b>0</b>	<b>0</b>	<b>0</b>	<b>0</b>	<b>0</b>	<b>851</b>

**TOTAL ESTIMATED RELEASED**

River:	Sacramento							American			Feather			Yuba		San Joaquin	Mokelumne	Stanislaus	TOTAL
Section No.:	2	3	4	5	6	7	8	9	10	10.1	11	12	12.1	13	14	15	16,17	18	TOTAL
January	0	0	0	0	0	0	0	0	0	0	0	0	0	0	0	0	0	0	0
February	0	9	0	0	0	0	0	0	0	0	0	0	0	0	0	0	0	0	9
March	92	0	0	0	0	0	0	0	0	0	875	0	0	0	0	0	0	0	967
April	0	0	0	0	0	0	0	0	0	0	214	0	0	0	0	0	0	0	214
May	0	0	0	0	0	0	0	115	0	0	596	0	0	0	0	0	0	0	711
June	0	0	0	0	0	0	0	0	0	0	134	0	0	0	0	0	0	0	134
July	0	0	0	0	0	0	0	46	0	0	188	0	0	0	0	0	0	0	234
August	0	0	0	0	0	0	0	0	0	0	325	25	0	0	0	0	0	0	350
September	0	0	0	0	0	0	0	0	0	0	215	0	0	0	0	0	0	0	215
October	234	40	0	71	0	0	0	0	0	0	0	0	0	0	0	0	0	0	345
November	0	30	0	0	0	0	0	13	0	0	285	0	0	0	0	0	0	0	328
December	0	0	11	0	0	0	0	0	0	0	0	0	0	0	0	0	0	0	11
<b>TOTAL:</b>	<b>326</b>	<b>79</b>	<b>11</b>	<b>71</b>	<b>0</b>	<b>0</b>	<b>0</b>	<b>174</b>	<b>0</b>	<b>0</b>	<b>2,831</b>	<b>25</b>	<b>0</b>	<b>0</b>	<b>0</b>	<b>0</b>	<b>0</b>	<b>0</b>	<b>3,516</b>

**ESTIMATED ANGLER-HOURS**

River:	Sacramento							American			Feather			Yuba		San Joaquin	Mokelumne	Stanislaus	TOTAL
Section No.:	2	3	4	5	6	7	8	9	10	10.1	11	12	12.1	13	14	15	16,17	18	TOTAL
January	0	0	0	0	0	0	0	0	0	0	0	0	0	0	0	0	0	0	0
February	34	20	0	0	0	0	0	0	37	0	0	0	0	0	0	0	0	0	91
March	138	6	4	0	0	0	0	13	0	0	820	0	0	0	0	0	0	0	982
April	63	0	0	0	0	0	0	0	21	0	463	0	0	0	0	0	0	0	546
May	77	34	12	0	16	0	0	138	0	0	289	0	0	0	0	0	0	0	566
June	0	0	0	0	0	0	0	98	0	0	143	0	0	0	0	0	0	0	242
July	81	0	0	0	0	0	0	126	74	0	89	123	0	0	0	0	0	0	493
August	240	0	0	0	0	0	0	322	0	0	488	12	0	0	0	0	0	0	1,062
September	266	0	113	0	0	0	0	0	0	0	157	24	0	0	0	0	0	0	559
October	761	161	0	79	0	0	0	0	0	0	197	33	0	0	0	0	0	0	1,231
November	317	148	0	0	0	0	0	150	0	0	1,140	0	0	0	0	0	0	0	1,755
December	0	9	1	0	0	0	0	13	0	0	14	0	0	0	0	0	0	0	37
<b>TOTAL:</b>	<b>1,978</b>	<b>378</b>	<b>130</b>	<b>79</b>	<b>16</b>	<b>0</b>	<b>0</b>	<b>860</b>	<b>131</b>	<b>0</b>	<b>3,800</b>	<b>192</b>	<b>0</b>	<b>0</b>	<b>0</b>	<b>0</b>	<b>0</b>	<b>0</b>	<b>7,564</b>

STURGEON

TOTAL ESTIMATED HARVEST

River:	Sacramento							American			Feather			Yuba		San Joaquin	Mokelumne	Stanislaus	TOTAL
Section No.:	2	3	4	5	6	7	8	9	10	10.1	11	12	12.1	13	14	15	16,17	18	TOTAL
January	150	60	16	0	0	0	0	0	0	0	0	0	0	0	0	0	0	0	226
February	79	0	82	0	0	0	0	0	0	0	0	0	0	0	0	0	0	0	161
March	55	0	96	0	0	0	0	0	0	0	0	0	0	0	0	0	0	0	152
April	0	0	24	0	0	0	0	0	0	0	0	0	0	0	0	0	0	0	24
May	0	0	0	0	0	0	0	0	0	0	0	0	0	0	0	0	0	0	0
June	0	0	0	0	0	0	0	0	0	0	0	0	0	0	0	0	0	0	0
July	0	0	0	0	0	0	0	0	0	0	0	0	0	0	0	0	0	0	0
August	0	0	0	0	0	0	0	0	0	0	0	0	0	0	0	0	0	0	0
September	0	0	0	0	0	0	0	0	0	0	0	0	0	0	0	0	0	0	0
October	0	0	0	0	0	0	0	0	0	0	0	0	0	0	0	0	0	0	0
November	16	0	0	0	0	0	0	0	0	0	0	0	0	0	0	0	0	0	16
December	55	0	0	0	0	0	0	0	0	0	0	0	0	0	0	0	0	0	55
TOTAL:	356	60	219	0	0	0	0	0	0	0	0	0	0	0	0	0	0	0	636

TOTAL ESTIMATED RELEASED

River:	Sacramento							American			Feather			Yuba		San Joaquin	Mokelumne	Stanislaus	TOTAL
Section No.:	2	3	4	5	6	7	8	9	10	10.1	11	12	12.1	13	14	15	16,17	18	TOTAL
January	21	0	8	0	0	0	0	0	0	0	0	0	0	0	0	0	0	0	30
February	34	0	6	0	0	0	0	0	0	0	0	0	0	0	0	0	0	0	40
March	37	0	8	0	0	0	0	0	0	0	0	0	0	0	0	0	0	0	45
April	0	0	0	0	0	0	0	0	0	0	0	0	0	0	0	0	0	0	0
May	39	0	0	0	0	0	0	0	0	0	0	0	0	0	0	0	0	0	39
June	0	0	0	0	0	0	0	0	0	0	0	0	0	0	0	0	0	0	0
July	0	0	0	0	0	0	0	0	0	0	0	0	0	0	0	0	0	0	0
August	0	0	0	0	0	0	0	0	0	0	0	0	0	0	0	0	0	0	0
September	0	0	0	0	0	0	0	0	0	0	0	0	0	0	0	0	0	0	0
October	0	0	0	0	0	0	0	0	0	0	0	0	0	0	0	0	0	0	0
November	0	0	0	0	0	0	0	0	0	0	0	0	0	0	0	0	0	0	0
December	0	0	0	0	0	0	0	0	0	0	0	0	0	0	0	0	0	0	0
TOTAL:	131	0	23	0	0	0	0	0	0	0	0	0	0	0	0	0	0	0	154

ESTIMATED ANGLER-HOURS

River:	Sacramento							American			Feather			Yuba		San Joaquin	Mokelumne	Stanislaus	TOTAL
Section No.:	2	3	4	5	6	7	8	9	10	10.1	11	12	12.1	13	14	15	16,17	18	TOTAL
January	17,430	3,329	7,029	0	0	0	0	0	0	0	0	0	0	0	0	0	0	0	27,788
February	21,073	4,169	15,427	0	0	0	0	0	0	0	0	0	0	0	0	0	0	0	40,669
March	36,191	2,636	18,201	0	388	0	0	0	0	0	0	0	0	0	0	0	0	0	57,417
April	5,799	1,093	3,323	0	0	0	0	0	0	0	285	0	0	0	0	0	0	0	10,501
May	1,860	338	1,427	0	191	0	0	0	0	0	0	0	0	0	0	0	0	0	3,815
June	0	0	0	0	0	0	0	0	0	0	0	0	0	0	0	0	0	0	0
July	18	0	0	0	54	0	0	0	0	0	0	0	0	0	0	0	0	0	72
August	0	0	0	0	0	0	0	0	0	0	0	0	0	0	0	0	0	0	0
September	0	0	0	0	0	0	0	0	0	0	0	0	0	0	0	0	0	0	0
October	439	0	52	0	0	0	0	0	0	0	0	0	0	0	0	0	0	0	491
November	3,034	507	1,618	0	0	0	0	0	0	0	0	0	0	0	0	0	0	0	5,160
December	8,794	857	1,951	0	42	0	0	0	0	0	0	0	0	0	0	0	0	0	11,644
TOTAL:	94,638	12,930	49,029	0	676	0	0	0	0	0	285	0	0	0	0	0	0	0	157,558

ANY (anglers fishing for any species)

TOTAL ESTIMATED HARVEST

River:	Sacramento							American			Feather			Yuba		San Joaquin	Mokelumne	Stanislaus	TOTAL
Section No.:	2	3	4	5	6	7	8	9	10	10.1	11	12	12.1	13	14	15	16,17	18	TOTAL
January	449	163	0	0	0	0	0	0	0	0	0	0	130	0	0	0	0	0	612
February	693	1,748	6	0	0	230	0	0	0	0	0	0	0	0	0	0	0	0	2,808
March	1,329	1,155	88	0	0	0	0	0	0	0	2,042	0	0	0	0	0	0	0	4,614
April	0	85	0	0	0	0	0	22	0	0	143	0	0	0	0	0	0	0	250
May	0	84	95	0	0	0	0	23	35	0	35	0	0	0	0	0	0	0	273
June	251	153	83	0	0	0	0	84	27	0	0	0	17	0	0	0	0	0	614
July	326	98	0	0	0	0	0	23	37	0	63	221	0	0	0	0	0	0	767
August	678	0	42	0	0	0	0	339	89	0	17	0	0	0	0	0	0	0	1,166
September	553	100	0	0	0	0	0	24	0	0	161	48	0	0	0	0	0	0	886
October	0	27	13	0	30	0	0	0	91	0	0	0	0	0	0	0	0	0	161
November	0	40	0	0	16	0	0	13	0	0	95	0	0	0	0	0	0	0	164
December	277	0	0	0	0	0	0	0	0	0	56	0	0	0	0	0	0	0	333
TOTAL:	4,556	3,653	328	0	47	230	0	528	280	0	2,742	269	17	0	0	0	0	0	12,648

TOTAL ESTIMATED RELEASED

River:	Sacramento							American			Feather			Yuba		San Joaquin	Mokelumne	Stanislaus	TOTAL
Section No.:	2	3	4	5	6	7	8	9	10	10.1	11	12	12.1	13	14	15	16,17	18	TOTAL
January	32	0	0	0	0	0	0	0	0	0	0	0	0	0	0	0	0	0	32
February	11	53	19	0	0	0	0	0	55	0	0	0	0	0	0	0	0	0	138
March	55	0	8	0	66	0	0	0	85	0	146	0	0	0	0	0	0	0	360
April	0	0	0	0	504	0	0	0	0	0	178	29	0	0	0	0	0	0	711
May	0	51	95	0	254	0	0	23	0	0	420	212	96	0	0	0	0	0	1,151
June	703	204	124	0	0	0	0	56	27	0	96	77	17	0	0	0	0	0	1,303
July	1,919	465	135	40	72	41	0	0	37	0	229	0	0	0	0	0	0	0	2,938
August	2,261	0	377	20	17	0	0	0	37	0	205	0	0	0	0	0	0	0	2,918
September	255	200	0	0	104	0	0	72	0	0	0	0	0	0	0	0	0	0	631
October	59	40	26	71	91	82	0	0	0	0	37	0	0	0	0	0	0	0	404
November	231	40	0	26	98	0	0	0	25	0	190	17	0	0	0	0	0	0	627
December	18	0	0	0	0	0	0	0	24	0	0	151	0	0	0	0	0	0	193
TOTAL:	5,545	1,053	785	157	1,206	123	0	151	289	0	1,501	486	112	0	0	0	0	0	11,408

ESTIMATED ANGLER-HOURS

River:	Sacramento							American			Feather			Yuba		San Joaquin	Mokelumne	Stanislaus	TOTAL
Section No.:	2	3	4	5	6	7	8	9	10	10.1	11	12	12.1	13	14	15	16,17	18	TOTAL
January	1,362	399	47	0	0	0	4	0	0	0	0	0	0	0	0	0	0	0	1,811
February	4,287	4,122	427	0	0	251	0	211	964	118	554	194	0	0	0	0	0	0	11,128
March	5,280	3,778	552	0	109	125	0	55	1,127	0	4,467	315	489	143	0	0	0	0	16,439
April	925	705	97	0	1,520	176	0	713	1,162	164	1,327	175	0	322	8	0	0	0	7,294
May	1,918	1,537	696	0	636	43	0	737	185	38	1,611	1,125	160	645	0	0	0	0	9,330
June	3,892	1,706	773	0	0	0	0	1,095	1,237	1,814	990	899	467	0	0	0	0	0	12,873
July	4,742	3,009	253	718	473	83	41	396	3,013	135	1,918	1,608	0	0	0	0	0	0	16,389
August	6,516	410	906	822	187	114	0	1,115	1,962	0	1,458	423	0	0	0	0	0	0	13,913
September	904	711	32	171	208	154	159	487	966	75	1,219	611	0	0	0	0	0	0	5,697
October	1,433	500	440	212	1,768	232	15	199	606	0	399	293	133	0	0	0	0	0	6,229
November	1,389	1,108	446	296	878	413	0	294	806	260	1,199	25	22	0	0	0	0	0	7,136
December	1,607	137	31	8	85	17	0	107	89	221	392	377	104	0	0	0	0	0	3,175
TOTAL:	34,255	18,121	4,698	2,227	5,863	1,607	218	5,409	12,118	2,826	15,535	6,045	1,376	1,110	8	0	0	0	111,415

## Appendix C:

# Estimated Angler-Hours and Sampling Frequency – 2003

TOTAL NUMBER OF ANGLER-HOURS

River:	-----Sacramento-----								-----American-----			-----Feather-----			Yuba-----	San Joaquin	-----Mokelumne-----	Stanislaus	TOTAL			
Section No.:	1	2	3	4	5	6	7	8	9	10	10.1	11	12	12.1	13	14	15	16	17	18	TOTAL	
January		24,818	2,141	7,484	209	0	3,625	1,526	2,112	29,593	5,496	1,436	8,505	733								87,678
February		23,614	5,799	11,519	1,902	458	2,050	2,266	1,992	23,710	1,867	1,315	3,379	65								79,934
March																						0
April																						0
May																						0
June																						0
July		38,303	16,068	10,469	5,064	15,182	1,558	9,775														96,419
August																						0
September																						0
October																						0
November																						0
December																						0
TOTAL:	0	86,735	24,008	29,472	7,175	15,639	7,233	13,566	4,103	53,303	7,363	2,751	11,885	797	0	0	0	0	0	0	0	264,030

TOTAL NUMBER OF SAMPLE-DAYS

River:	-----Sacramento-----								-----American-----			-----Feather-----			Yuba-----	San Joaquin	-----Mokelumne-----	Stanislaus	TOTAL			
Section No.:	1	2	3	4	5	6	7	8	9	10	10.1	11	12	12.1	13	14	15	16	17	18	TOTAL	
January		6	6	6	6	6	6	6	6	6	6	6	5	6								77
February		6	6	6	6	6	6	6	6	6	6	6	6	6								78
March																						0
April																						0
May																						0
June																						0
July		6	6	6	6	6	6	6														42
August																						0
September																						0
October																						0
November																						0
December																						0
TOTAL:	0	18	18	18	18	18	18	18	12	12	12	12	11	12	0	0	0	0	0	0	0	197

## Appendix D:

# Estimated Harvest, Released and Angler-Hours by Target Species – 2003

CHINOOK SALMON

TOTAL ESTIMATED HARVEST

River:	Sacramento							American			Feather			Yuba		San Joaquin		Mokelumne		Stanislaus	TOTAL
Section No.:	1	2	3	4	5	6	7	8	9	10	10.1	11	12	12.1	13	14	15	16	17	18	TOTAL
January	0	0	0	0	0	0	41	0	0	0	48	0	0	0							89
February	0	0	0	0	0	0	0	0	0	0	0	0	0	0							0
March																					0
April																					0
May																					0
June																					0
July		47	71	56	0	352	0	0													527
August																					0
September																					0
October																					0
November																					0
December																					0
TOTAL:	0	47	71	56	0	352	41	0	0	0	48	0	0	0	0	0	0	0	0	0	616

TOTAL ESTIMATED RELEASED

River:	Sacramento							American			Feather			Yuba		San Joaquin		Mokelumne		Stanislaus	TOTAL
Section No.:	1	2	3	4	5	6	7	8	9	10	10.1	11	12	12.1	13	14	15	16	17	18	TOTAL
January	0	0	0	0	0	0	0	0	0	0	0	0	0	0							0
February	0	0	0	0	0	0	0	0	0	0	0	0	0	0							0
March																					0
April																					0
May																					0
June																					0
July	0	0	0	0	0	0	0	0													0
August																					0
September																					0
October																					0
November																					0
December																					0
TOTAL:	0	0	0	0	0	0	0	0	0	0	0	0	0	0	0	0	0	0	0	0	0

ESTIMATED ANGLER-HOURS

River:	Sacramento							American			Feather			Yuba		San Joaquin		Mokelumne		Stanislaus	TOTAL
Section No.:	1	2	3	4	5	6	7	8	9	10	10.1	11	12	12.1	13	14	15	16	17	18	TOTAL
January	0	0	0	0	0	0	2,879	0	0	0	335	0	0	0							3,214
February	0	0	0	0	0	0	0	0	0	0	0	0	0	0							0
March																					0
April																					0
May																					0
June																					0
July		11,124	9,464	8,281	763	8,967	889	0													39,489
August																					0
September																					0
October																					0
November																					0
December																					0
TOTAL:	0	11,124	9,464	8,281	763	8,967	3,769	0	0	0	335	0	0	0	0	0	0	0	0	0	42,703

STEELHEAD

TOTAL ESTIMATED HARVEST

River:	Sacramento								American			Feather			Yuba	San Joaquin	Mokelumne	Stanislaus			
Section No.:	1	2	3	4	5	6	7	8	9	10	10.1	11	12	12.1	13	14	15	16	17	18	
January		0	0	0	0	0	0	0	0	341	143	0	0	50							
February		0	0	0	0	0	29	0	0	230	0	0	0	0							
March																					
April																					
May																					
June																					
July		0	0	0	0	29	0	0													
August																					
September																					
October																					
November																					
December																					
TOTAL:	0	0	0	0	0	29	29	0	0	571	143	0	0	50	0	0	0	0	0	0	0

TOTAL ESTIMATED RELEASED

River:	Sacramento								American			Feather			Yuba	San Joaquin	Mokelumne	Stanislaus			
Section No.:	1	2	3	4	5	6	7	8	9	10	10.1	11	12	12.1	13	14	15	16	17	18	
January		0	0	0	0	0	0	238	0	1,795	96	0	1,734	50							
February		0	0	0	0	0	146	89	0	1,574	0	0	831	0							
March																					
April																					
May																					
June																					
July		0	0	0	0	0	0	0													
August																					
September																					
October																					
November																					
December																					
TOTAL:	0	0	0	0	0	0	146	327	0	3,369	96	0	2,565	50	0	0	0	0	0	0	0

ESTIMATED ANGLER-HOURS

River:	Sacramento								American			Feather			Yuba	San Joaquin	Mokelumne	Stanislaus			
Section No.:	1	2	3	4	5	6	7	8	9	10	10.1	11	12	12.1	13	14	15	16	17	18	
January		0	0	0	0	0	0	713	159	28,672	4,731	94	7,977	335							
February		0	0	0	0	259	299	164	49	22,750	1,843	0	3,222	65							
March																					
April																					
May																					
June																					
July		0	0	0	0	117	0	204													
August																					
September																					
October																					
November																					
December																					
TOTAL:	0	0	0	0	0	376	299	1,081	209	51,422	6,574	94	11,199	400	0	0	0	0	0	0	0



RAINBOW TROUT

TOTAL ESTIMATED HARVEST

River:	Sacramento								American			Feather			Yuba	San Joaquin	Mokelumne	Stanislaus		
Section No.:	1	2	3	4	5	6	7	8	9	10	10.1	11	12	12.1	13	14	15	16	17	18
January		0	0	0	0	0	0	0	0	0	0	0	0	0						
February		0	0	0	0	0	0	0	0	0	0	0	0	0						
March																				
April																				
May																				
June																				
July		0	0	0	0	0	0	0												
August																				
September																				
October																				
November																				
December																				
TOTAL:	0	0	0	0	0	0	0	0	0	0	0	0	0	0	0	0	0	0	0	0

TOTAL ESTIMATED RELEASED

River:	Sacramento								American			Feather			Yuba	San Joaquin	Mokelumne	Stanislaus		
Section No.:	1	2	3	4	5	6	7	8	9	10	10.1	11	12	12.1	13	14	15	16	17	18
January		0	0	0	0	0	41	555	0	0	0	0	63	0						
February		0	0	0	0	80	204	671	0	0	0	0	43	0						
March																				
April																				
May																				
June																				
July		0	0	0	0	29	60	5,352												
August																				
September																				
October																				
November																				
December																				
TOTAL:	0	0	0	0	0	109	306	6,578	0	0	0	0	106	0	0	0	0	0	0	0

ESTIMATED ANGLER-HOURS

River:	Sacramento								American			Feather			Yuba	San Joaquin	Mokelumne	Stanislaus		
Section No.:	1	2	3	4	5	6	7	8	9	10	10.1	11	12	12.1	13	14	15	16	17	18
January		0	0	0	0	0	145	812	0	116	0	0	528	0						
February		0	0	0	0	199	890	2,102	0	187	0	0	143	0						
March																				
April																				
May																				
June																				
July		0	0	0	0	37	533	9,520												
August																				
September																				
October																				
November																				
December																				
TOTAL:	0	0	0	0	0	236	1,568	12,434	0	303	0	0	671	0	0	0	0	0	0	0

AMERICAN SHAD

TOTAL ESTIMATED HARVEST

River:	Sacramento								American			Feather			Yuba	San Joaquin	Mokelumne	Stanislaus		
Section No.:	1	2	3	4	5	6	7	8	9	10	10.1	11	12	12.1	13	14	15	16	17	18
January		0	0	0	0	0	0	0	0	0	0	0	0	0						
February		0	0	0	0	0	0	0	0	0	0	0	0	0						
March																				
April																				
May																				
June																				
July		47	0	0	30	29	0	0												
August																				
September																				
October																				
November																				
December																				
TOTAL:	0	47	0	0	30	29	0	0	0	0	0	0	0	0	0	0	0	0	0	0

TOTAL ESTIMATED RELEASED

River:	Sacramento								American			Feather			Yuba	San Joaquin	Mokelumne	Stanislaus		
Section No.:	1	2	3	4	5	6	7	8	9	10	10.1	11	12	12.1	13	14	15	16	17	18
January		0	0	0	0	0	0	0	0	0	0	0	0	0						
February		0	0	0	0	0	0	0	0	0	0	0	0	0						
March																				
April																				
May																				
June																				
July		0	0	0	30	910	0	0												
August																				
September																				
October																				
November																				
December																				
TOTAL:	0	0	0	0	30	910	0	0	0	0	0	0	0	0	0	0	0	0	0	0

ESTIMATED ANGLER-HOURS

River:	Sacramento								American			Feather			Yuba	San Joaquin	Mokelumne	Stanislaus		
Section No.:	1	2	3	4	5	6	7	8	9	10	10.1	11	12	12.1	13	14	15	16	17	18
January		0	0	0	0	0	0	0	0	0	0	0	0	0						
February		0	0	0	0	0	0	0	0	0	0	0	0	0						
March																				
April																				
May																				
June																				
July		189	71	0	752	1,203	0	0												
August																				
September																				
October																				
November																				
December																				
TOTAL:	0	189	71	0	752	1,203	0	0	0	0	0	0	0	0	0	0	0	0	0	0

STRIPED BASS

TOTAL ESTIMATED HARVEST

River:	Sacramento								American			Feather			Yuba	San Joaquin	Mokelumne	Stanislaus		
Section No.:	1	2	3	4	5	6	7	8	9	10	10.1	11	12	12.1	13	14	15	16	17	18
January		0	0	0	0	0	0	0	53	0	0	0	0	0						
February		69	0	0	0	0	0	0	0	0	0	26	0	0						
March																				
April																				
May																				
June																				
July		284	95	0	59	294	0	0												
August																				
September																				
October																				
November																				
December																				
TOTAL:	0	353	95	0	59	294	0	0	53	0	0	26	0	0	0	0	0	0	0	0

TOTAL ESTIMATED RELEASED

River:	Sacramento								American			Feather			Yuba	San Joaquin	Mokelumne	Stanislaus		
Section No.:	1	2	3	4	5	6	7	8	9	10	10.1	11	12	12.1	13	14	15	16	17	18
January		0	0	0	0	0	0	0	27	217	0	0	0	0						
February		28	0	0	0	0	0	0	0	0	0	0	0	0						
March																				
April																				
May																				
June																				
July		6,053	3,166	901	1,608	558	0	0												
August																				
September																				
October																				
November																				
December																				
TOTAL:	0	6,080	3,166	901	1,608	558	0	0	27	217	0	0	0	0	0	0	0	0	0	0

ESTIMATED ANGLER-HOURS

River:	Sacramento								American			Feather			Yuba	San Joaquin	Mokelumne	Stanislaus		
Section No.:	1	2	3	4	5	6	7	8	9	10	10.1	11	12	12.1	13	14	15	16	17	18
January		399	21	43	30	0	166	0	1,713	170	0	507	0	0						
February		3,775	374	0	0	0	0	0	1,634	197	0	618	0	0						
March																				
April																				
May																				
June																				
July		15,735	4,153	1,611	3,386	3,720	0	0												
August																				
September																				
October																				
November																				
December																				
TOTAL:	0	19,909	4,548	1,654	3,416	3,720	166	0	3,347	367	0	1,125	0	0	0	0	0	0	0	0

**CATFISH (all species)**

**TOTAL ESTIMATED HARVEST**

River:	Sacramento								American			Feather			Yuba	San Joaquin	Mokelumne	Stanislaus		
Section No.:	1	2	3	4	5	6	7	8	9	10	10.1	11	12	12.1	13	14	15	16	17	18
January		307	0	0	0	0	0	0	0	0	0	94	0	0						
February		0	0	0	0	0	0	0	0	0	0	0	0	0						
March																				
April																				
May																				
June																				
July		426	213	169	0	0	0	0												
August																				
September																				
October																				
November																				
December																				
<b>TOTAL:</b>	<b>0</b>	<b>733</b>	<b>213</b>	<b>169</b>	<b>0</b>	<b>0</b>	<b>0</b>	<b>0</b>	<b>0</b>	<b>0</b>	<b>0</b>	<b>94</b>	<b>0</b>	<b>0</b>	<b>0</b>	<b>0</b>	<b>0</b>	<b>0</b>	<b>0</b>	<b>0</b>

**TOTAL ESTIMATED RELEASED**

River:	Sacramento								American			Feather			Yuba	San Joaquin	Mokelumne	Stanislaus		
Section No.:	1	2	3	4	5	6	7	8	9	10	10.1	11	12	12.1	13	14	15	16	17	18
January		0	0	0	0	0	0	0	0	0	0	0	0	0						
February		0	14	0	0	0	0	0	0	0	0	0	0	0						
March																				
April																				
May																				
June																				
July		331	0	84	0	0	0	0												
August																				
September																				
October																				
November																				
December																				
<b>TOTAL:</b>	<b>0</b>	<b>331</b>	<b>14</b>	<b>84</b>	<b>0</b>	<b>0</b>	<b>0</b>	<b>0</b>	<b>0</b>	<b>0</b>	<b>0</b>	<b>0</b>	<b>0</b>	<b>0</b>	<b>0</b>	<b>0</b>	<b>0</b>	<b>0</b>	<b>0</b>	<b>0</b>

**ESTIMATED ANGLER-HOURS**

River:	Sacramento								American			Feather			Yuba	San Joaquin	Mokelumne	Stanislaus		
Section No.:	1	2	3	4	5	6	7	8	9	10	10.1	11	12	12.1	13	14	15	16	17	18
January		461	51	0	0	0	0	0	53	0	0	398	0	0						
February		17	374	42	5	0	0	0	25	0	0	0	0	0						
March																				
April																				
May																				
June																				
July		3,948	981	408	59	0	0	0												
August																				
September																				
October																				
November																				
December																				
<b>TOTAL:</b>	<b>0</b>	<b>4,426</b>	<b>1,406</b>	<b>450</b>	<b>64</b>	<b>0</b>	<b>0</b>	<b>0</b>	<b>78</b>	<b>0</b>	<b>0</b>	<b>398</b>	<b>0</b>	<b>0</b>	<b>0</b>	<b>0</b>	<b>0</b>	<b>0</b>	<b>0</b>	<b>0</b>

SUNFISH (all species)

TOTAL ESTIMATED HARVEST

River:	Sacramento								American			Feather			Yuba	San Joaquin	Mokelumne	Stanislaus		
Section No.:	1	2	3	4	5	6	7	8*	9	10	10.1	11	12	12.1	13	14	15	16	17	18
January		0	0	0	0	0	0	0	0	0	0	0	0	0						
February		0	0	0	0	0	0	0	0	0	0	0	0	0						
March																				
April																				
May																				
June																				
July		0	0	0	0	0	0	0												
August																				
September																				
October																				
November																				
December																				
TOTAL:	0	0	0	0	0	0	0	0	0	0	0	0	0	0	0	0	0	0	0	0

TOTAL ESTIMATED RELEASED

River:	Sacramento								American			Feather			Yuba	San Joaquin	Mokelumne	Stanislaus		
Section No.:	1	2	3	4	5	6	7	8*	9	10	10.1	11	12	12.1	13	14	15	16	17	18
January		0	0	0	0	0	0	0	0	0	0	0	0	0						
February		0	0	0	0	0	0	0	0	0	0	0	0	0						
March																				
April																				
May																				
June																				
July		0	0	0	0	0	0	0												
August																				
September																				
October																				
November																				
December																				
TOTAL:	0	0	0	0	0	0	0	0	0	0	0	0	0	0	0	0	0	0	0	0

ESTIMATED ANGLER-HOURS

River:	Sacramento								American			Feather			Yuba	San Joaquin	Mokelumne	Stanislaus		
Section No.:	1	2	3	4	5	6	7	8*	9	10	10.1	11	12	12.1	13	14	15	16	17	18
January		0	0	0	0	0	0	0	0	0	0	0	0	0						
February		0	0	0	0	0	0	0	0	0	0	0	0	0						
March																				
April																				
May																				
June																				
July		0	0	0	0	0	0	0												
August																				
September																				
October																				
November																				
December																				
TOTAL:	0	0	0	0	0	0	0	0	0	0	0	0	0	0	0	0	0	0	0	0

**BLACK BASS (all species)**

**TOTAL ESTIMATED HARVEST**

River:	Sacramento								American			Feather			Yuba	San Joaquin	Mokelumne	Stanislaus		
Section No.:	1	2	3	4	5	6	7	8*	9	10	10.1	11	12	12.1	13	14	15	16	17	18
January		0	0	0	0	0	0	0	0	0	0	0	0	0						
February		0	0	0	0	0	29	0	0	0	0	0	0	0						
March																				
April																				
May																				
June																				
July		0	0	0	0	0	0	0												
August																				
September																				
October																				
November																				
December																				
<b>TOTAL:</b>	0	0	0	0	0	0	29	0	0	0	0	0	0	0	0	0	0	0	0	0

**TOTAL ESTIMATED RELEASED**

River:	Sacramento								American			Feather			Yuba	San Joaquin	Mokelumne	Stanislaus		
Section No.:	1	2	3	4	5	6	7	8*	9	10	10.1	11	12	12.1	13	14	15	16	17	18
January		0	0	0	0	0	0	0	0	0	0	0	0	0						
February		0	0	0	0	0	0	0	0	0	0	0	0	0						
March																				
April																				
May																				
June																				
July		567	0	0	0	0	0	0												
August																				
September																				
October																				
November																				
December																				
<b>TOTAL:</b>	0	567	0	0	0	0	0	0	0	0	0	0	0	0	0	0	0	0	0	0

**ESTIMATED ANGLER-HOURS**

River:	Sacramento								American			Feather			Yuba	San Joaquin	Mokelumne	Stanislaus		
Section No.:	1	2	3	4	5	6	7	8*	9	10	10.1	11	12	12.1	13	14	15	16	17	18
January		0	0	0	0	0	0	0	173	0	0	0	0	0						
February		0	43	0	0	0	15	0	0	0	0	0	0	0						
March																				
April																				
May																				
June																				
July		1,253	0	0	0	0	0	0												
August																				
September																				
October																				
November																				
December																				
<b>TOTAL:</b>	0	1,253	43	0	0	0	15	0	173	0	0	0	0	0	0	0	0	0	0	0

**STURGEON**

**TOTAL ESTIMATED HARVEST**

River:	Sacramento								American			Feather			Yuba	San Joaquin	Mokelumne	Stanislaus		
Section No.:	1	2	3	4	5	6	7	8*	9	10	10.1	11	12	12.1	13	14	15	16	17	18
January		61	9	0	0	0	0	0	0	0	0	0	0	0						
February		41	14	21	9	0	0	0	0	0	0	0	0	0						
March																				
April																				
May																				
June																				
July		0	0	0	0	29	0	0												
August																				
September																				
October																				
November																				
December																				
<b>TOTAL:</b>	0	103	23	21	9	29	0	0	0	0	0	0	0	0	0	0	0	0	0	0

**TOTAL ESTIMATED RELEASED**

River:	Sacramento								American			Feather			Yuba	San Joaquin	Mokelumne	Stanislaus		
Section No.:	1	2	3	4	5	6	7	8*	9	10	10.1	11	12	12.1	13	14	15	16	17	18
January		61	0	0	0	0	0	0	0	0	0	0	0	0						
February		28	0	14	0	0	0	0	0	0	0	0	0	0						
March																				
April																				
May																				
June																				
July		0	0	0	0	0	0	0												
August																				
September																				
October																				
November																				
December																				
<b>TOTAL:</b>	0	89	0	14	0	0	0	0	0	0	0	0	0	0	0	0	0	0	0	0

**ESTIMATED ANGLER-HOURS**

River:	Sacramento								American			Feather			Yuba	San Joaquin	Mokelumne	Stanislaus		
Section No.:	1	2	3	4	5	6	7	8*	9	10	10.1	11	12	12.1	13	14	15	16	17	18
January		19,591	1,799	7,317	179	0	0	0	0	31	0	187	0	0						
February		15,630	3,623	11,283	1,584	0	0	0	0	0	0	0	0	0						
March																				
April																				
May																				
June																				
July		473	0	0	0	308	0	0												
August																				
September																				
October																				
November																				
December																				
<b>TOTAL:</b>	0	35,694	5,421	18,599	1,763	308	0	0	0	31	0	187	0	0	0	0	0	0	0	0

ANY (anglers fishing for any species)

TOTAL ESTIMATED HARVEST

River:	Sacramento								American			Feather			Yuba	San Joaquin	Mokelumne	Stanislaus		
Section No.:	1	2	3	4	5	6	7	8*	9	10	10.1	11	12	12.1	13	14	15	16	17	18
January		2,232	86	0	0	0	0	0	0	0	0	0	0	0						
February		2,043	403	7	73	0	0	0	0	0	0	0	0	0						
March																				
April																				
May																				
June																				
July		473	47	0	0	29	0	0												
August																				
September																				
October																				
November																				
December																				
TOTAL:	0	4,747	536	7	73	29	0	0	0	0	0	0	0	0	0	0	0	0	0	0

TOTAL ESTIMATED RELEASED

River:	Sacramento								American			Feather			Yuba	San Joaquin	Mokelumne	Stanislaus		
Section No.:	1	2	3	4	5	6	7	8*	9	10	10.1	11	12	12.1	13	14	15	16	17	18
January		0	34	9	0	0	0	0	0	0	0	0	0	149						
February		14	43	0	9	0	0	0	0	0	0	0	0	0						
March																				
April																				
May																				
June																				
July		378	307	0	0	59	0	0												
August																				
September																				
October																				
November																				
December																				
TOTAL:	0	392	385	9	9	59	0	0	0	0	0	0	0	149	0	0	0	0	0	0

ESTIMATED ANGLER-HOURS

River:	Sacramento								American			Feather			Yuba	San Joaquin	Mokelumne	Stanislaus		
Section No.:	1	2	3	4	5	6	7	8*	9	10	10.1	11	12	12.1	13	14	15	16	17	18
January		4,367	269	124	0	0	435	0	13	604	430	250	0	397						
February		4,192	1,385	195	314	0	846	0	284	576	24	697	14	0						
March																				
April																				
May																				
June																				
July		5,580	1,400	169	103	829	136	51												
August																				
September																				
October																				
November																				
December																				
TOTAL:	0	14,139	3,055	488	417	829	1,417	51	297	1,179	454	947	14	397	0	0	0	0	0	0